

# **SAMS**

# **Instructions**

# **For**

# **Multi-Loc Stop**

# **Systems**

**Scotchman Advanced Measuring Systems, Inc.**

**180 E. Highway 14 P.O. Box 850**

**Philip, S.D. 57567**

**Phone: 1-605-859-2542 1-800-843-8844**

**Fax: 1-800-843-5545**

**e-mail: [sales@scotchman.com](mailto:sales@scotchman.com)**

**[www.scotchman.com](http://www.scotchman.com)**

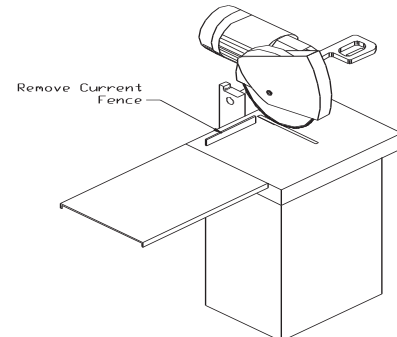
**PRINTED JANUARY 2013**

# Set-Up Instructions for the Multi-Loc Stop System; Standard & Heavy Duty

## TOOLS NEEDED:

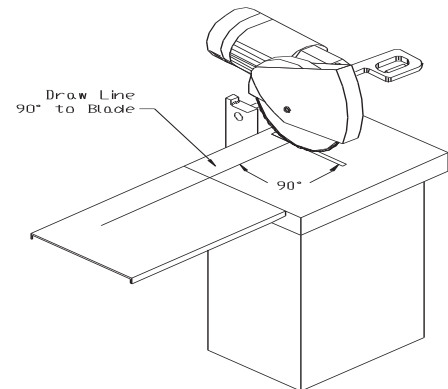
Power drill, 21/64" or 11/32" drill bit  
Two 1/2" wrenches, #2 Phillips screwdriver  
Carpenter's square, rubber mallet, center punch,  
Hammer & tape measure

**STEP 1:** Remove the existing back fence of the saw.  
(SEE FIGURE 1.) Do NOT remove it if you are planning that the gauging system will begin beyond the current fence.



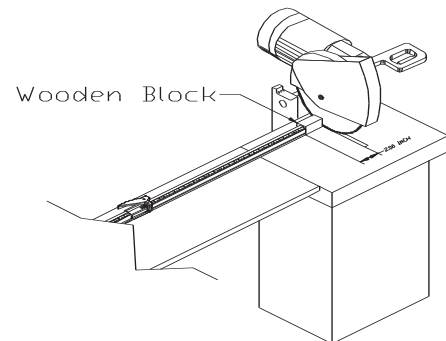
**FIGURE 1**

**STEP 2:** Draw a line on the table that is perpendicular to the saw blade at the position where you want the front of the gauging system to be.  
(SEE FIGURE 2.)



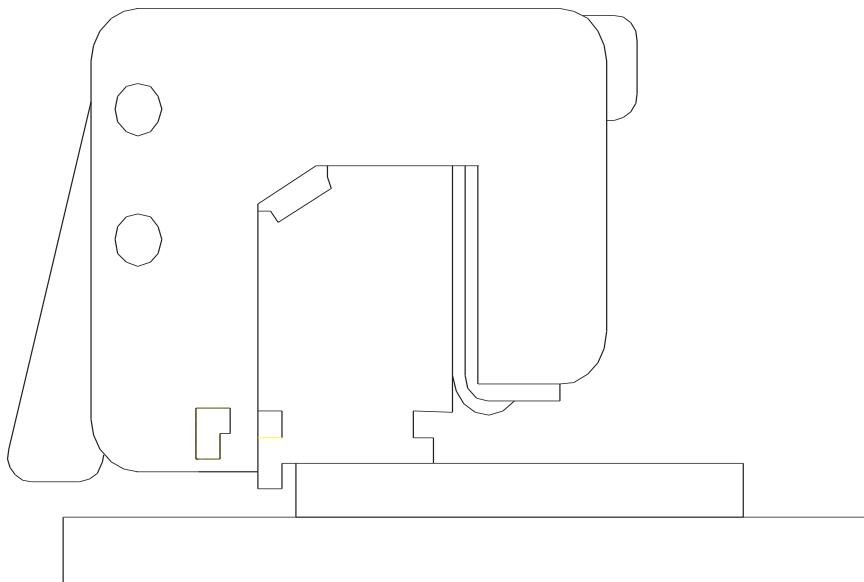
**FIGURE 2**

**STEP 3:** Place the spacer rail down with the front edge aligned with the mark on the table. (The holes are closer to the back side.) The rail should be kept away from the saw blade by at least 2". A block should be installed in the gap to assure that the blade does not accidentally cut into the gauging system. Failure to do this can lead to personal injury. (SEE FIGURE 3.)



**FIGURE 3**

- STEP 4:** Use the center punch to mark the center of all of the holes.
- STEP 5:** Remove the rail and drill holes at the center punch marks.
- STEP 6:** Realign the rail.
- STEP 7:** Align the Multi-Loc System and install the 5/16 x 1-1/2 bolts in the holes. **(DO NOT TIGHTEN.)** The front edge of the stop block should be flush or slightly behind the front of the spacer rail. **(SEE FIGURE 4.)**
- STEP 8:** Set one stop approximately two feet from the saw blade. Set the distance roughly with a tape measure.
- STEP 9:** Tighten the bolts enough to hold the system for a few cuts. The system should be loose enough that it can be adjusted by using the rubber mallet.
- STEP 10:** Make a few cuts at different lengths. After each cut, check the length to assure that it is cut exactly at 1/16". Adjust, as necessary, with the rubber mallet.
- STEP 11:** Once the correct setting is obtained, tighten the bolts securely.



**FIGURE 4**

# **Instructions for Installing the Tape Measure**

- Step 1:** Install the handle or stop at approximately 15-20 inches from the blade.
- Step 2:** Cut a piece of material at this setting. (Do not move the stop after you have made the cut.)
- Step 3:** Slide the tape measure under the stop in the groove provided for the tape, with the backer still attached to the tape measure.
- Step 4:** Remove 3" or 4" of the backer.
- Step 5:** Align the tape at the pointer to the length of the material in Step 2.
- Step 6:** Apply the uncovered portion of tape to the rail.
- Step 7:** Remove the stop of the slide handle out of the way.
- Step 8:** Remove the backer from the remainder of the tape.
- Step 9:** While using only light tension, apply the remainder of the tape.
- Step 10:** You could make an optional cut of material to check the first section.
- Step 11:** Cut the remaining sections at the first mark.
- Step 12:** Install the remaining sections by aligning the ends and making cuts to check the alignment.

# Joining of Two Rails for Lengths Over 12'

To use the Advance Measuring System in lengths greater than 12', you will joint a 12' rail to a shorter rail. To insure that the "teeth" line up together, a separate shorter rail (supplied with your order) will be used to precisely space the rails.

## SPECIAL TOOLS REQUIRED:

- 2) 4" C-clamps
- 1) 4' or longer straight edge

First, mount the first rail as described in the installation manual. Do not install the measuring tape yet. Make sure that you have securely fastened this rail to the saw's table.

Second, insert the alignment pin (D) into the first rail. place the second rail as close as possible to the first rail. Using two "C" clamps, clamp the shorter positioning rail (G) to the back of the first and second rails. To achieve good tooth alignment, you may need to move the second rail slightly. Keep the second rail as close as possible to the first rail.

Once you have made the correct alignment, and with the spacer rail still clamped to the rails, make sure that the second rail is straight in line with the first rail. Use the straight edge to confirm the alignment. With the rails aligned and straight, tighten the second rail to the saw's table or to the mounting plate, using the mounting kit pictured in Figure 5 below. Now you can install the tape measure.

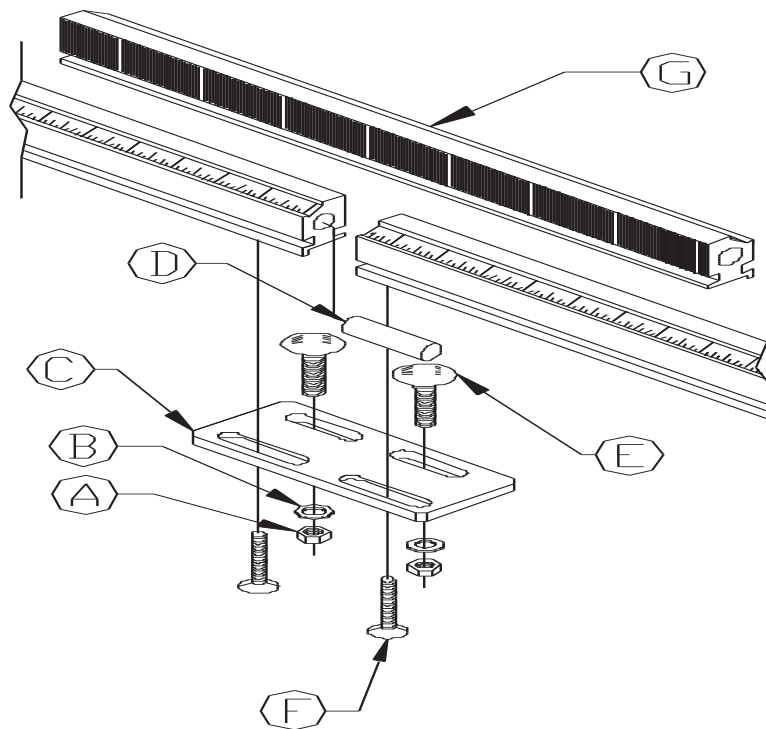


FIGURE 5

# Multi-Loc Standard Left Hand Extended Stop

ITEM	PART #	DESCRIPTION	QTY
1	029162	Multi-Loc Flipper - Standard	1
2	141320	1/4" x 7/8" Roll Pin	1
3	029159	LHE Multi-Loc - Standard	1
4	029167	1/4" x 3/4" Plunger	2
5	029166	Multi-Loc Pointer	1
6	133313	#8-32 UNC x 1/4" PRHM Screw	1
7	029164	Spring Plung Guide	1
8	029140	Complete Stop	

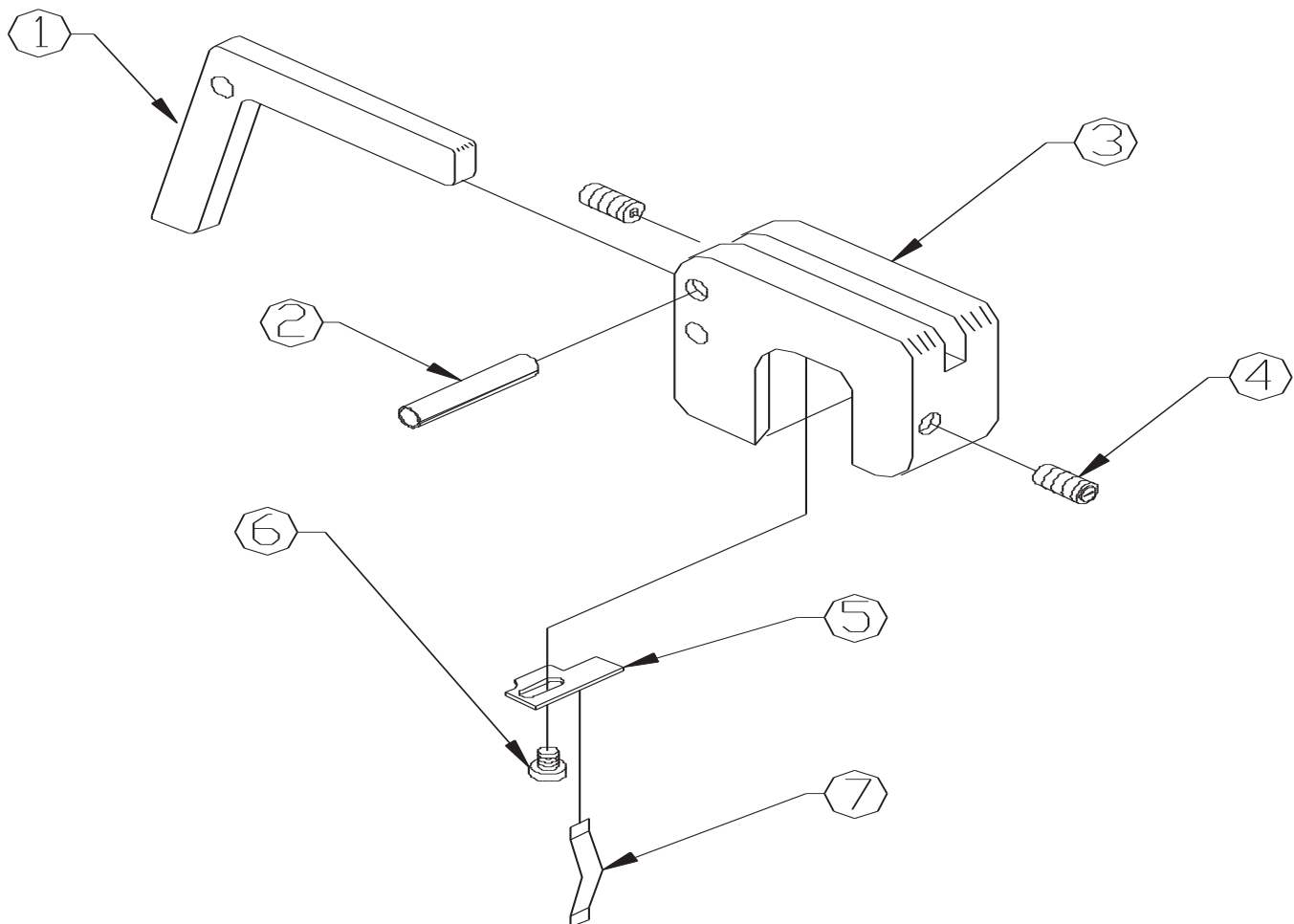


FIGURE 6

# Multi-Loc Standard Right Hand Extended Stop

ITEM	PART #	DESCRIPTION	QTY
1	029162	Multi-Loc Flipper - Standard	1
2	141320	1/4" x 7/8" Roll Pin	1
3	029161	RHE Multi-Loc Standard Raw	1
4	029167	1/4" x 3/4" Plunger	2
5	029166	Multi-Loc Pointer	1
6	133313	#8-32 x 1/4" PRHM Screw	1
7	029164	Spring Plung Guide	1
8	029142	Complete Stop	

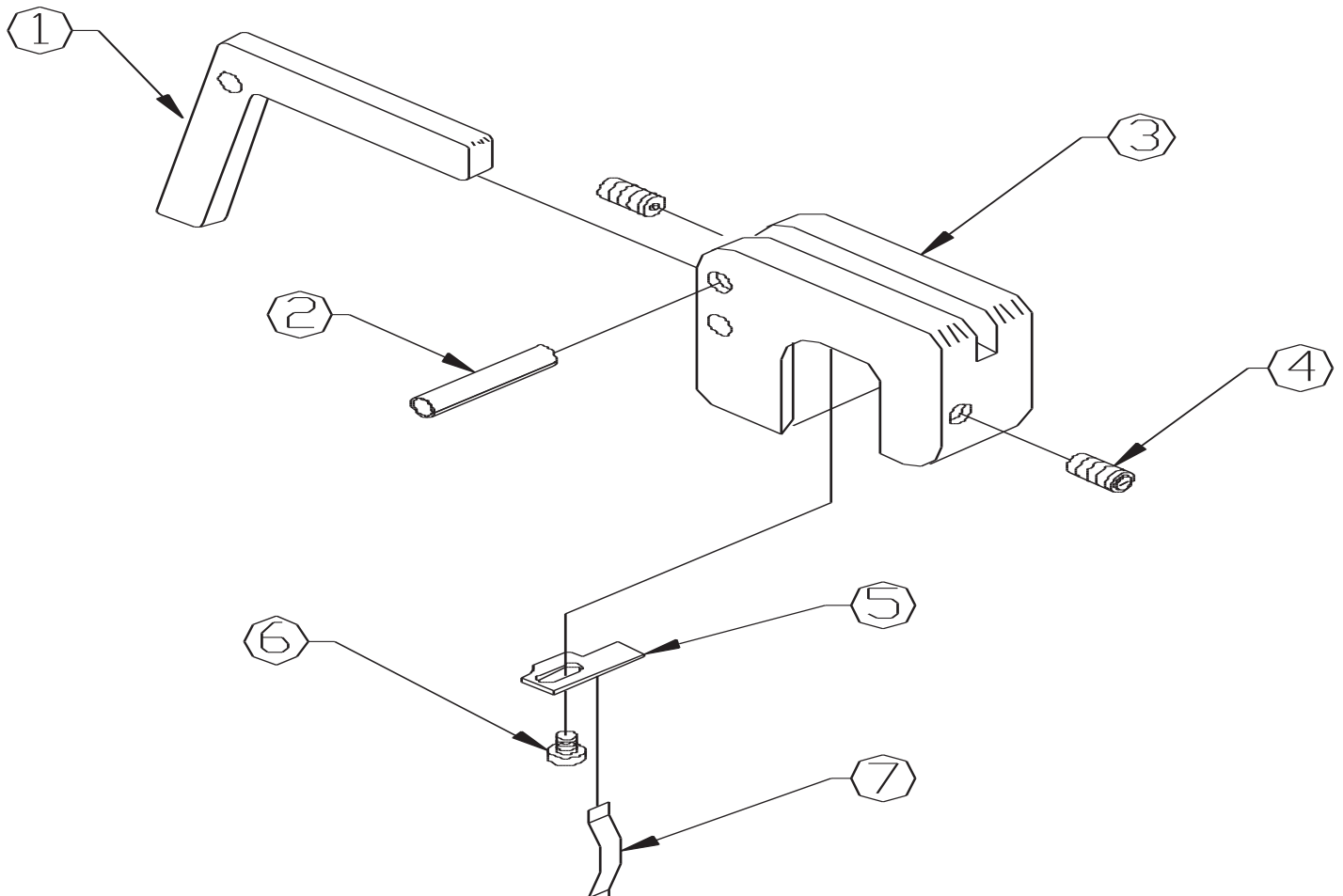


FIGURE 7

# Multi-Loc Vertical Left Hand Standard Stop

ITEM	PART #	DESCRIPTION	QTY
1	029297	Slider Multi-Loc Stop	1
2	141320	1/4" x 7/8" Roll Pin	2
3	029159	LHE Multi-Loc Standard	1
4	029167	1/4" x 3/4" Plunger	2
5	029166	Multi-Loc Pointer	1
6	133313	#8-32 x 1/4" PRHM Screw	1
7	029164	Spring Plung Guide	1
8	029298	Complete Stop	

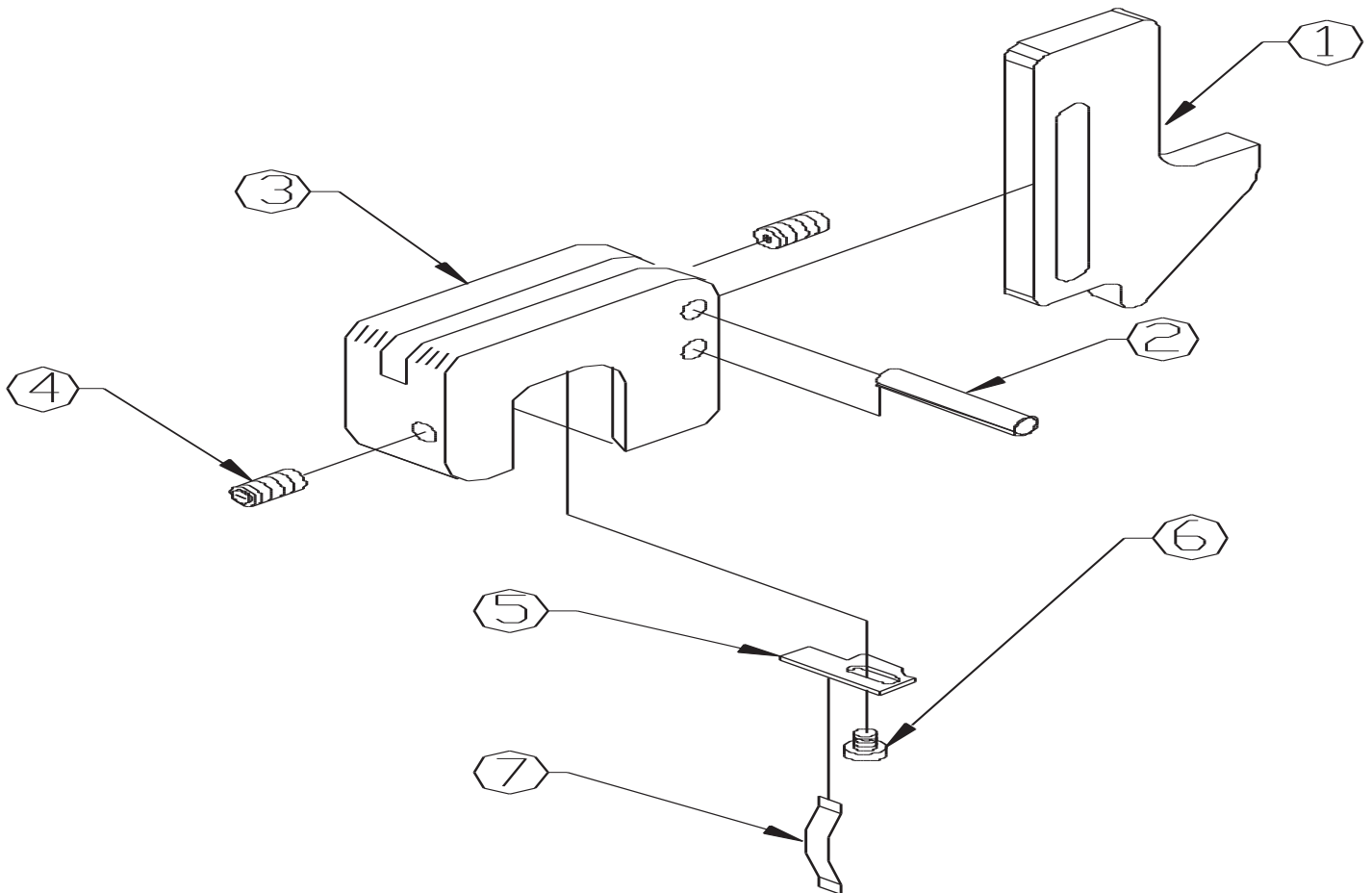


FIGURE 8



# Multi-Loc Vertical Right Hand Standard Stop

ITEM	PART #	DESCRIPTION	QTY
1	029297	Slider Multi-Loc Stop	1
2	141320	1/4" x 7/8" Roll Pin	2
3	029161	RHE Multi-Loc Standard Raw	1
4	029167	1/4" x 3/4" Plunger	2
5	029166	Multi-Loc Pointer	1
6	133313	#8-32 x 1/4" PRHM Screw	1
7	029164	Spring Plung Guide	1
8	029299	Complete Stop	

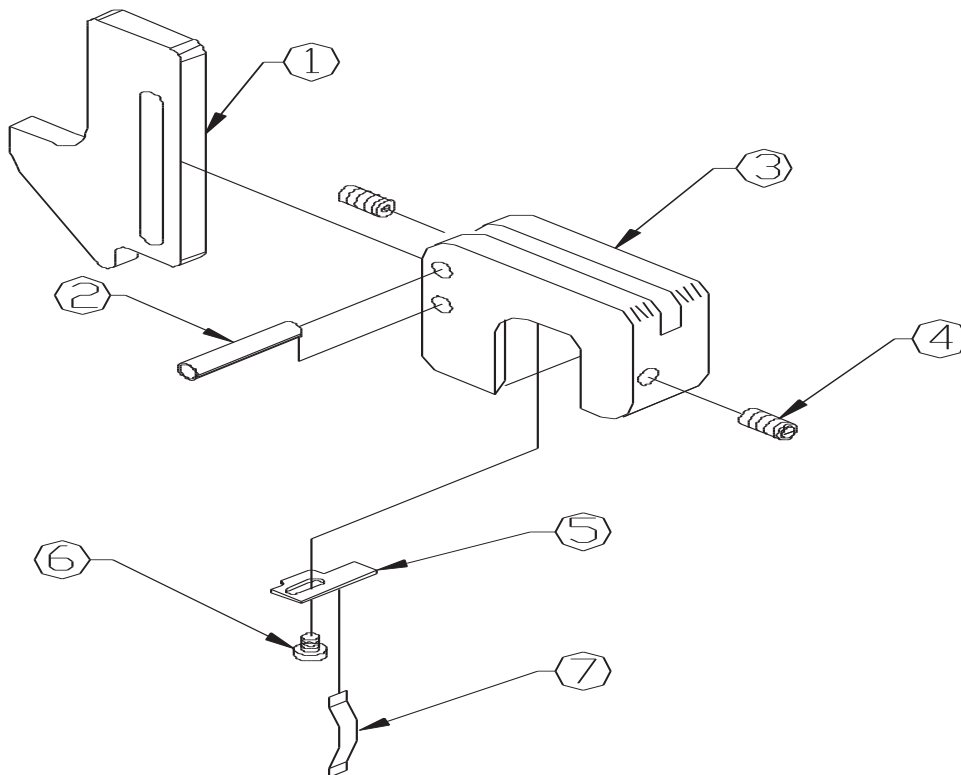


FIGURE 9

# Multi-Loc Left Hand Heavy Duty Stop

ITEM	PART #	DESCRIPTION	QTY
1	029170	Flipper - Heavy Duty	1
2	141413	1/4" x 1-3/8" Roll Pin	1
3	029155	LFT Multi-Loc Raw Heavy	1
4	029167	1/4" x 3/4" Plunger	2
5	029166	Multi-Loc Pointer	1
6	133313	#8-32 x 1/4" PRHM Screw	1
7	029164	Spring Plung Guide	1
8	029150	Complete Stop	

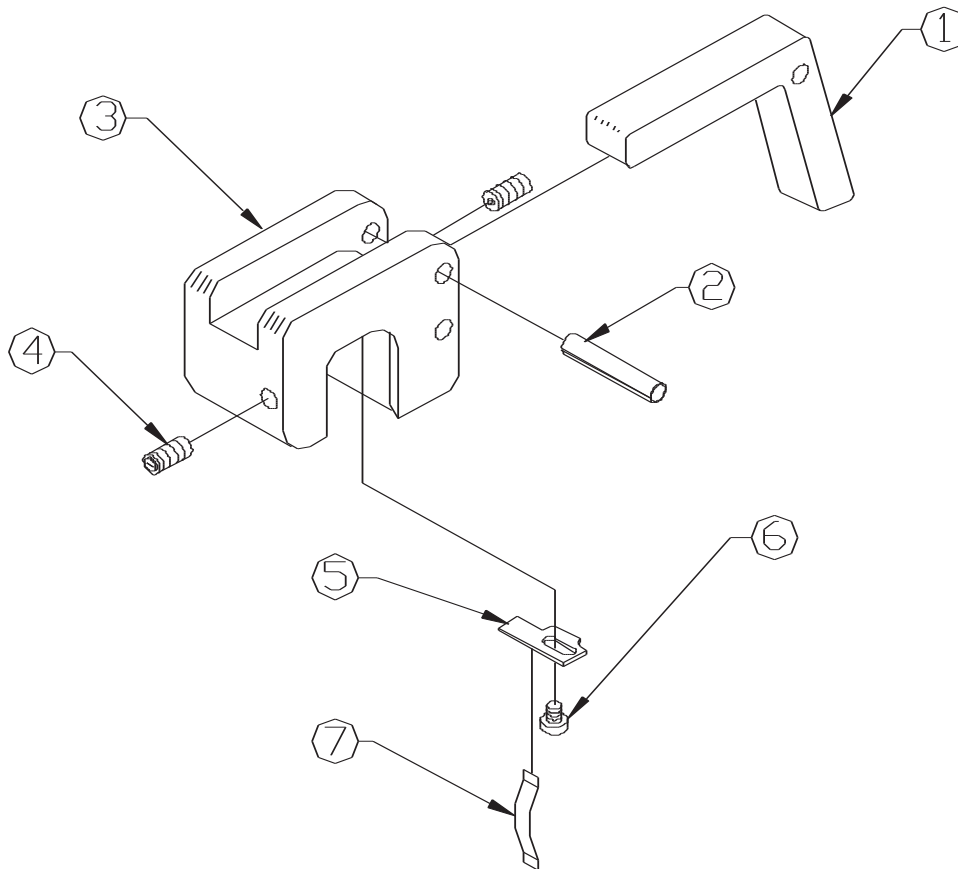


FIGURE 10

# Multi-Loc Right Hand Heavy Duty Stop

ITEM	PART #	DESCRIPTION	QTY
1	029170	Flipper - Heavy Duty	1
2	141413	1/4" x 1-3/8" Roll Pin	1
3	029157	RHE Multi-Loc Heavy	1
4	029167	1/4" x 3/4" Plunger	2
5	029166	Multi-Loc Pointer	1
6	133313	#8-32 x 1/4" PRHM Screw	1
7	029164	Spring Plung Guide	1
8	029152	Complete StopAssembly	1

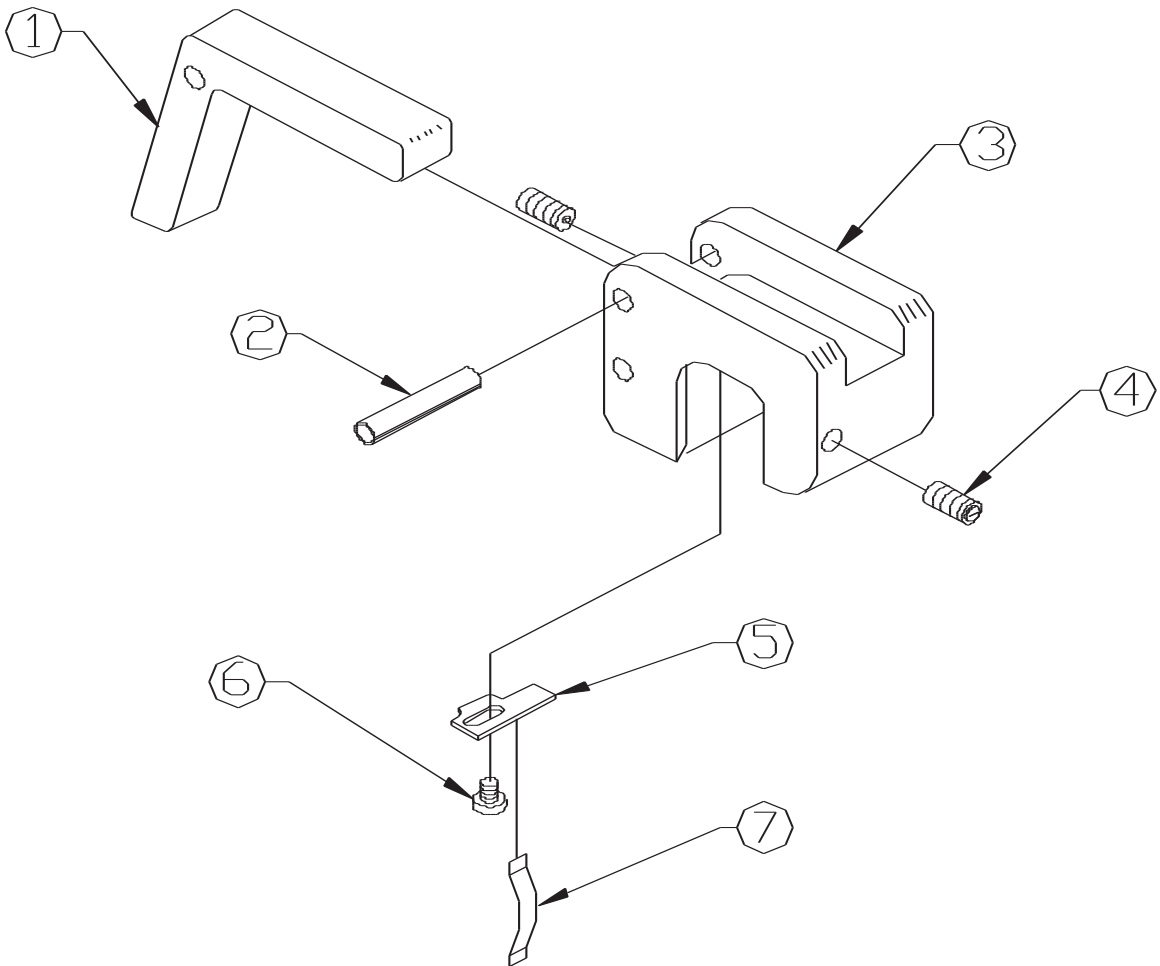


FIGURE 11

# Multi-Loc Left Hand Extended Heavy Duty Stop

ITEM	PART #	DESCRIPTION	QTY
1	029171	Flipper - Ext Heavy	1
2	141413	1/4" x 1-3/8" Roll Pin	1
3	029155	LHE Multi-Loc Heavy	1
4	029167	1/4" x 3/4" Plunger	2
5	029166	Multi-Loc Pointer	1
6	133313	#8-32 x 1/4" PRHM Screw	1
7	029164	Spring Plung Guide	1
8	029158	Complete Stop Assembly	1

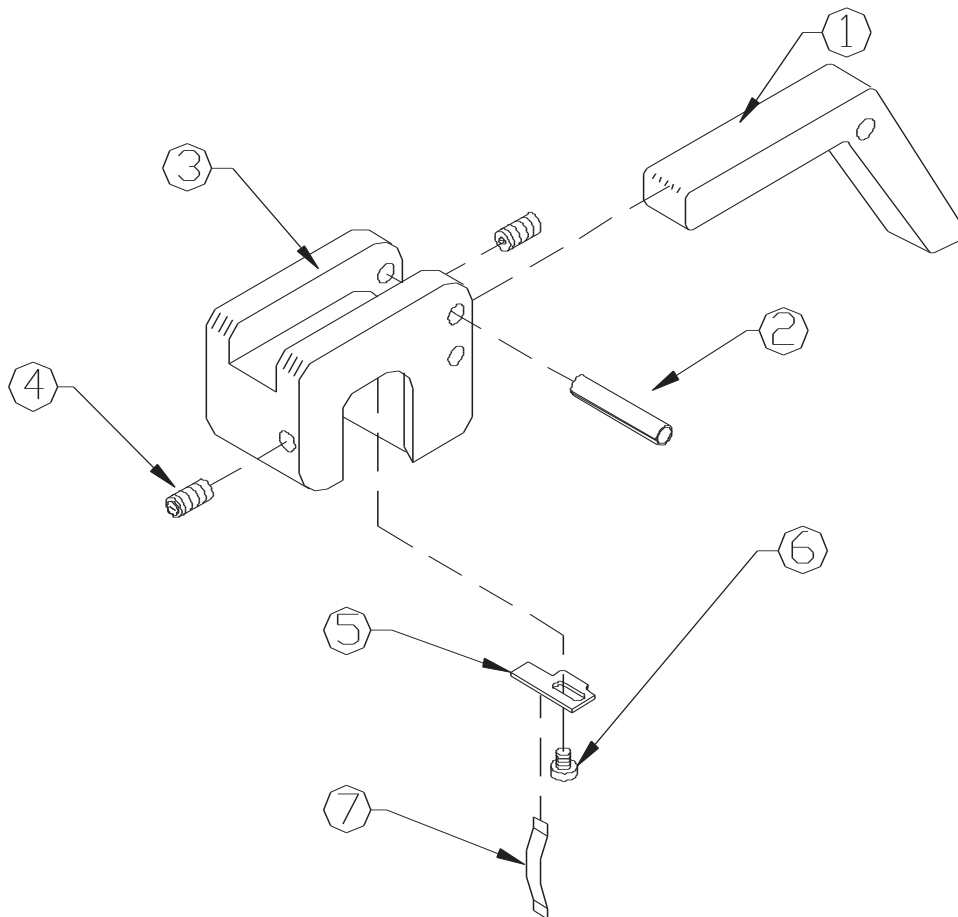


FIGURE 12

# Multi-Loc Right Hand Extended Heavy Duty Stop

ITEM	PART #	DESCRIPTION	QTY
1	029171	Flipper - Ext Heavy	1
2	141413	1/4" x 1-3/8" Roll Pin	1
3	029157	RHE Multi-Loc Heavy	1
4	029167	1/4" x 3/4" Plunger	2
5	029166	Multi-Loc Pointer	1
6	133313	#8-32 x 1/4" PRHM Screw	1
7	029164	Spring Plung Guide	1
8	029160	Complete Stop Assembly	1

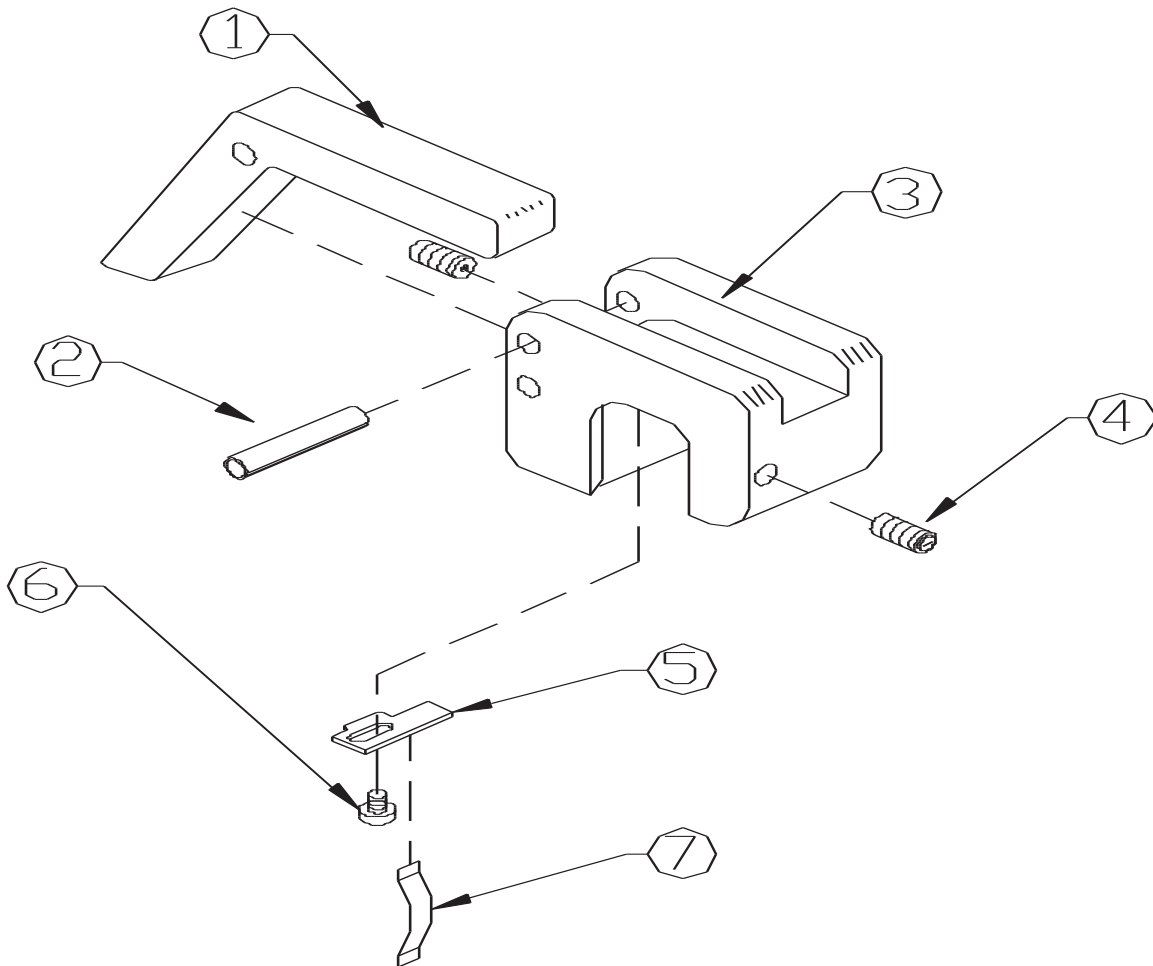


FIGURE 13

# Multi-Loc Left Hand Vertical Heavy Duty Stop

ITEM	PART #	DESCRIPTION	QTY
1	029268	Texas Slider	1
2	141413	1/4" x 1-3/8" Roll Pin	2
3	029155	LHE Multi-Loc Heavy	1
4	029167	1/4" x 3/4" Plunger	2
5	029166	Multi-Loc Pointer	1
6	133313	#8-32 x 1/4" PRHM Screw	1
7	029164	Spring Plung Guide	1
8	029267	Complete Stop Assembly	1

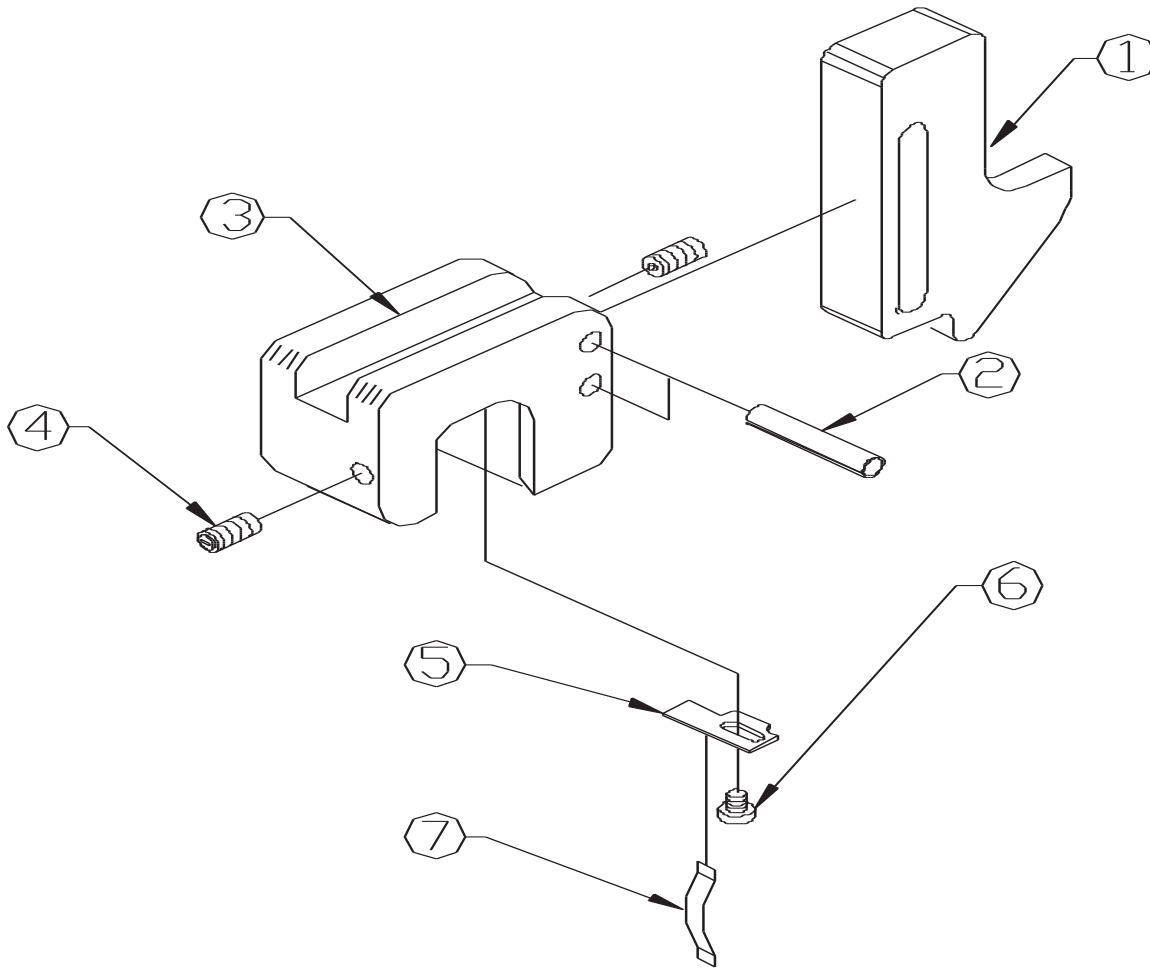


FIGURE 14

# Multi-Loc Right Hand Vertical Heavy Duty Stop

ITEM	PART #	DESCRIPTION	QTY
1	029268	Texas Slider	1
2	141413	1/4" x 1-3/8" Roll Pin	2
3	029157	RHE Multi-Loc Heavy	1
4	029167	1/4" x 3/4" Plunger	2
5	029166	Multi-Loc Pointer	1
6	133313	#8-32 x 1/4" PRHM Screw	1
7	029164	Spring Plung Guide	1
8	029269	Complete Stop Assembly	1

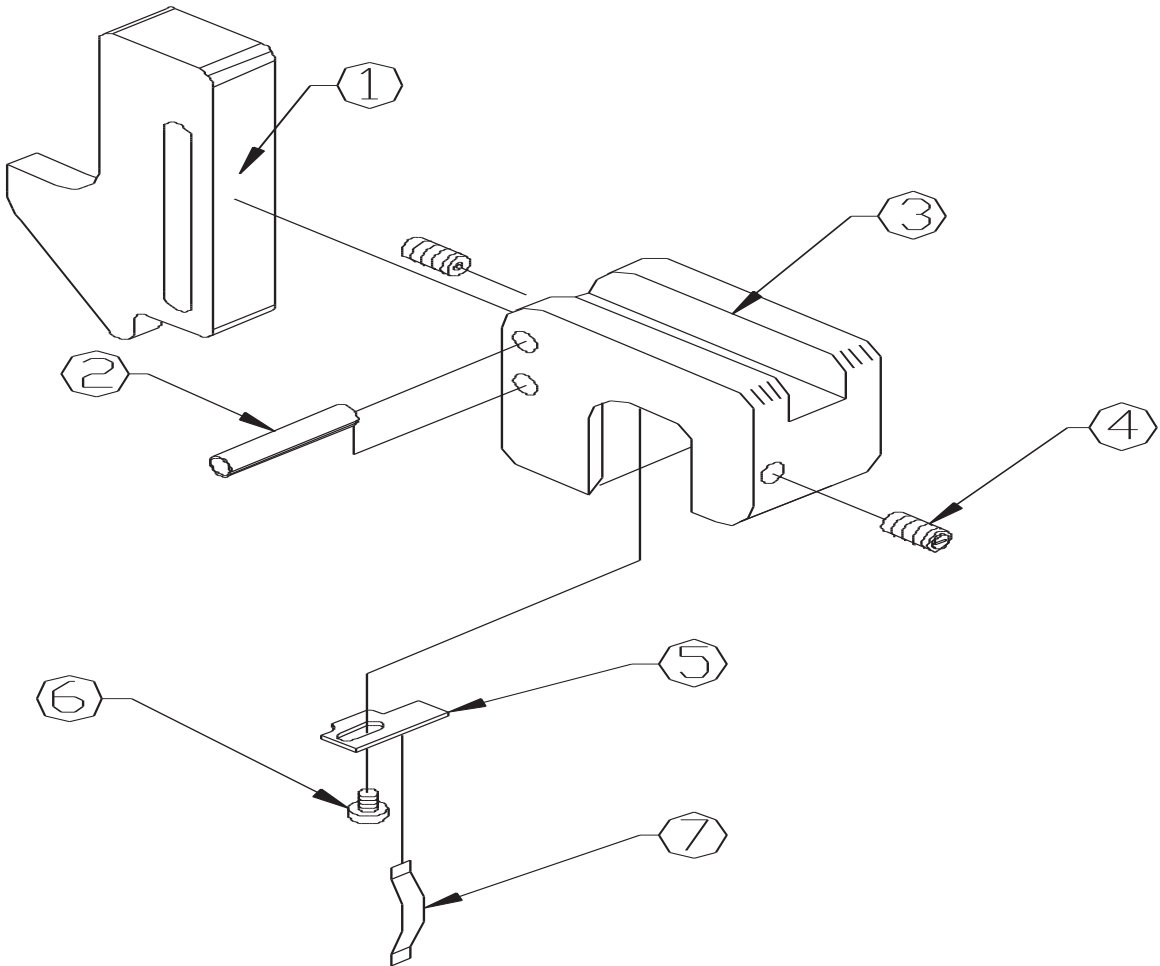


FIGURE 15

# Multi-Loc System Standard Left Hand

ITEM	PART #	DESCRIPTION	5'-STD	10'-STD	15'-STD	20'-STD
			QTY	QTY	QTY	QTY
1	029140	Multi-Loc Block STD LH	3	3	3	3
2	029201	Main Rail - 5 Foot	1			
2	029206	Main Rail - 10 Foot		1		
2	029201-029206-029173	Main Rail - 15 Foot			1	
2	029206-(2 pcs)-029173	Main Rail - 20 Foot				1
2	029206-(2 pcs)-029201-029173	Main Rail - 25 Foot				
3	029220	Left Hand Tape 1/2 x 12	1	1		
3	029233	Left Hand Tape 1/2 x 40			1	1
4	029123	1/4 x 3 Spacer Rail 10 Foot 1/2		1	1-1/2	2
5	029215	Rail Mounting Bracket Complete	2	3	3	4
5A	130107	5/16-18 x 1 FSHCS	4	6	6	8
5 & 6B	114011	5/16 Washer	4	6	6	8
5 & 6C	108011	5/16 Hex Nut	4	6	6	8
5D	130110	Carriage Bolt 5/16-18 x 2-1/2	4	6	6	8
5E	029217	Rail Mounting Bracket	2	3	3	4
6	029213	Conveyor Mounting Bracket Complete	2	3	3	4
6E	029217	Conveyor Mounting Bracket	2	3	3	4
6F	130107	5/16 x 18 x 1 FSHCS	4	6	6	8

## Complete Left Hand Assemblies

029520	5 Foot LH Multi-Loc STD
029526	10 Foot LH Multi-Loc STD
029527	15 Foot LH Multi-Loc STD
029529	20 Foot LH Multi-Loc STD



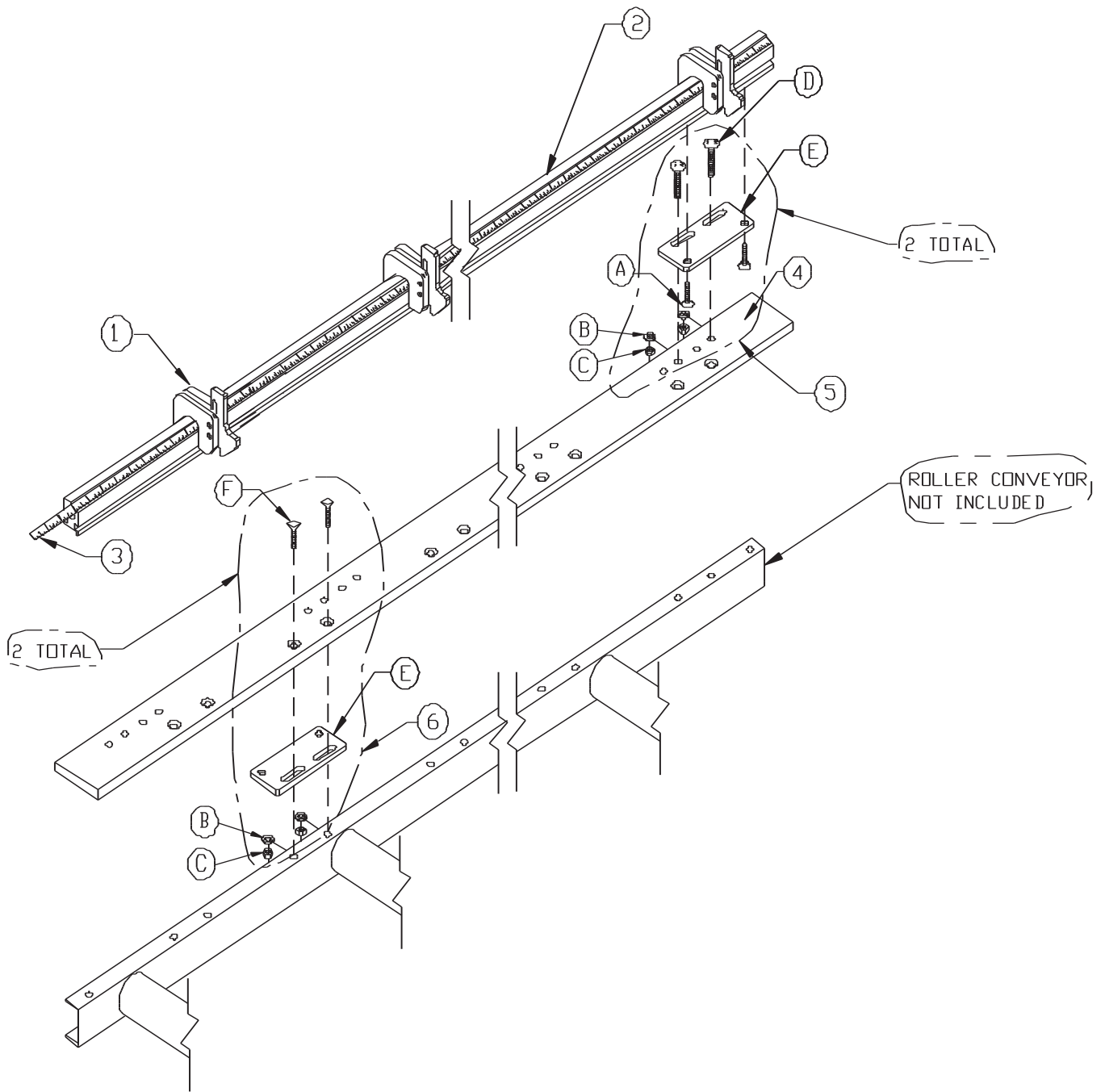


FIGURE 16

# Multi-Loc System Standard Right Hand

ITEM	PART #	DESCRIPTION	5'-STD	10'-STD	15'-STD	20'-STD
			QTY	QTY	QTY	QTY
1	029142	Multi-Loc Block STD RH	3	3	3	3
2	029201	Main Rail - 5 Foot	1			
2	029206	Main Rail - 10 Foot		1		
2	029201-029206-029173	Main Rail - 15 Foot			1	
2	029206-(2 pcs)-029173	Main Rail - 20 Foot				1
2	029206-(2 pcs)-029201-029173	Main Rail - 25 Foot				
3	029226	Right Hand Tape 1/2 x 12	1	1		
3	029234	Right Hand Tape 1/2 x 40			1	1
4	029123	1/4 x 3 Spacer Rail 10 Foot 1/2		1	1-1/2	2
5	029215	Rail Mounting Bracket Complete	2	3	3	4
5A	130107	5/16-18 x 1 FSHCS	4	6	6	8
5 & 6B	114011	5/16 Washer	4	6	6	8
5 & 6C	108011	5/16 Hex Nut	4	6	6	8
5D	130110	Carriage Bolt 5/16-18 x 2-1/2	4	6	6	8
5E	029217	Rail Mounting Bracket	2	3	3	4
6	029213	Conveyor Mounting Bracket Complete	2	3	3	4
6E	029217	Conveyor Mounting Bracket	2	3	3	4
6F	130107	5/16 x 18 x 1 FSHCS	4	6	6	8

## Complete Right Hand Assemblies

029530	5Foot RH Multi-Loc STD
029536	10 Foot RH Multi-Loc STD
029537	15 Foot RH Multi-Loc STD
029539	20 Foot RLH Multi-Loc STD

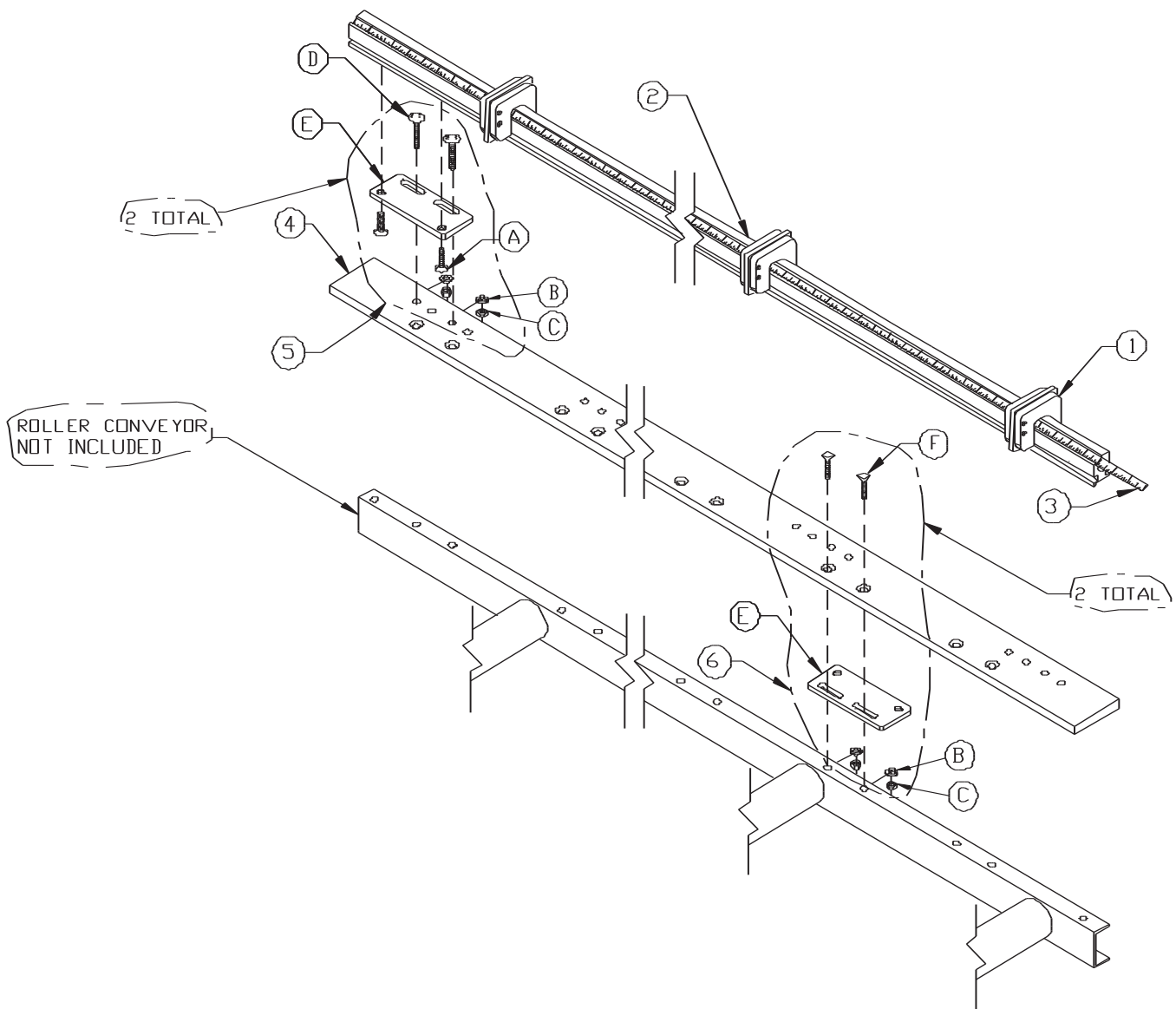


FIGURE 17

# Multi-Loc System Heavy Duty Left Hand

ITEM	PART #	DESCRIPTION	5'-STD	10'-STD	15'-STD	20'-STD
			QTY	QTY	QTY	QTY
1	029150	Multi-Loc Block HD LH	3	3	3	3
2	029201	Main Rail - 5 Foot	1			
2	029206	Main Rail - 10 Foot		1		
2	029201-029206-029173	Main Rail - 15 Foot			1	
2	029206-(2 pcs)-029173	Main Rail - 20 Foot				1
2	029206-(2 pcs)-029201-029173	Main Rail - 25 Foot				
3	029226	Right Hand Tape 1/2 x 12	1	1		
3	029234	Right Hand Tape 1/2 x 40			1	1
4	029123	1/4 x 3 Spacer Rail 10 Foot 1/2		1	1-1/2	2
5	029215	Rail Mounting Bracket Complete	2	3	3	4
5A	130107	5/16-18 x 1 FSHCS	4	6	6	8
5 & 6B	114011	5/16 Washer	4	6	6	8
5 & 6C	108011	5/16 Hex Nut	4	6	6	8
5D	130110	Carriage Bolt 5/16-18 x 2-1/2	4	6	6	8
5E	029217	Rail Mounting Bracket	2	3	3	4
6	029213	Conveyor Mounting Ass'y	2	3	3	4
6E	029217	Mounting Bracket	2	3	3	4
6F	130107	5/16 x 18 x 1 FSHCS	4	6	6	8

## Complete Left Hand Assemblies

029540	5 Foot LH Multi-Loc STD
029546	10 Foot LH Multi-Loc STD
029547	15 Foot LH Multi-Loc STD
029549	20 Foot LH Multi-Loc STD

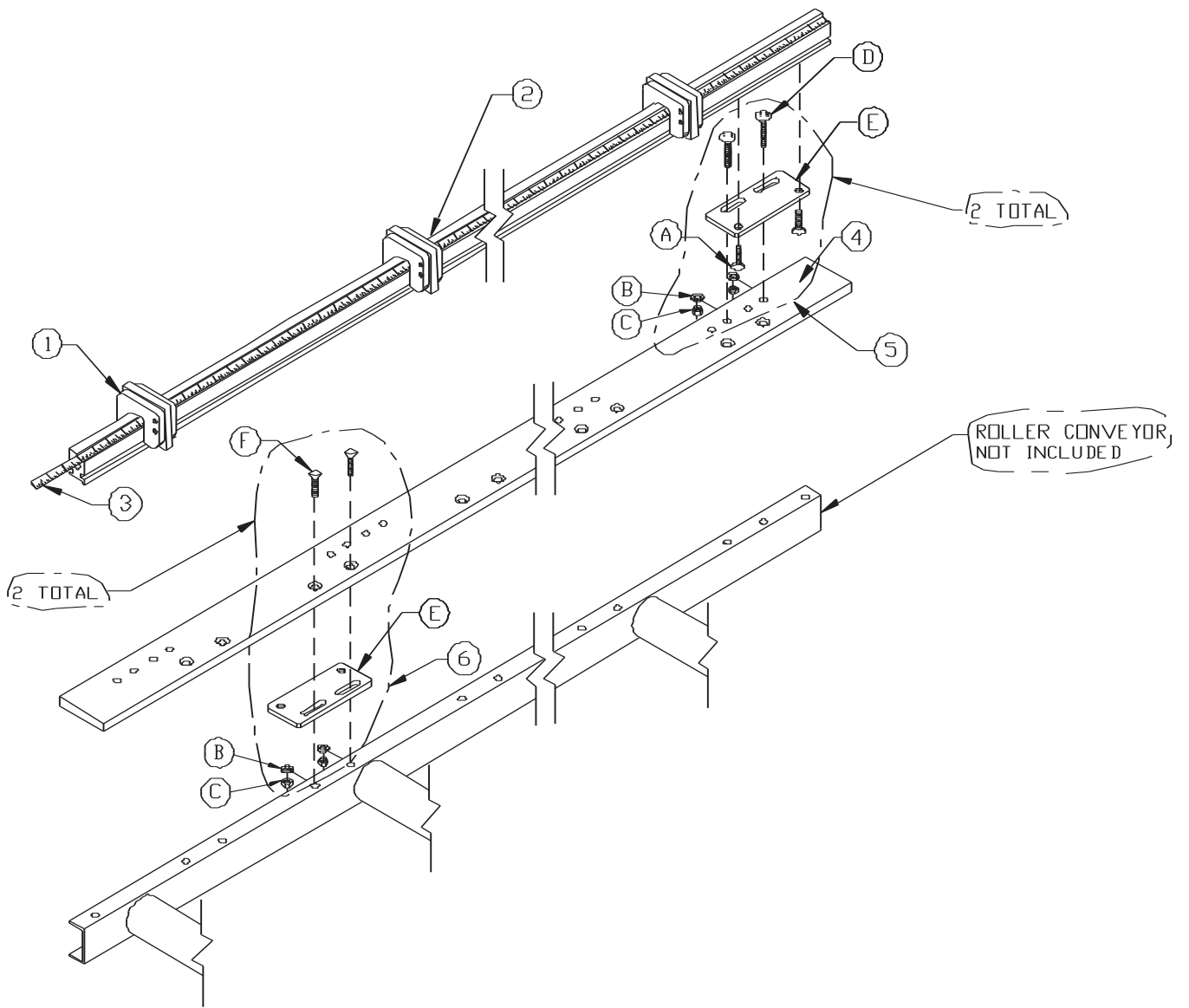


FIGURE 18

# Multi-Loc System Heavy Duty Right Hand

ITEM	PART #	DESCRIPTION	5'-STD	10'-STD	15'-STD	20'-STD
			QTY	QTY	QTY	QTY
1	029152	Multi-Loc Block HD LH	3	3	3	3
2	029201	Main Rail - 5 Foot	1			
2	029206	Main Rail - 10 Foot		1		
2	029201-029206-029173	Main Rail - 15 Foot			1	
2	029206-(2 pcs)-029173	Main Rail - 20 Foot				1
2	029206-(2 pcs)-029201-029173	Main Rail - 25 Foot				
3	029226	Right Hand Tape 1/2 x 12	1	1		
3	029234	Right Hand Tape 1/2 x 40			1	1
4	029123	1/4 x 3 Spacer Rail 10 Foot 1/2		1	1-1/2	2
5	029215	Rail Mounting Bracket Complete	2	3	3	4
5A	130107	5/16-18 x 1 FSHCS	4	6	6	8
5 & 6B	114011	5/16 Washer	4	6	6	8
5 & 6C	108011	5/16 Hex Nut	4	6	6	8
5D	130110	Carriage Bolt 5/16-18 x 2-1/2	4	6	6	8
5E	029217	Rail Mounting Bracket	2	3	3	4
6	029213	Conveyor Mounting 2 Bracket Complete	3	3	4	
6E	029217	Conveyor Mounting Bracket	2	3	3	4
6F	130107	5/16 x 18 x 1 FSHCS	4	6	6	8

## Complete Right Hand Assemblies Heavy Duty

029550	5 Foot RH Multi-Loc HD
029556	10 Foot RH Multi-Loc HD
029557	15 Foot RH Multi-Loc HD
029559	20 Foot RLH Multi-Loc HD

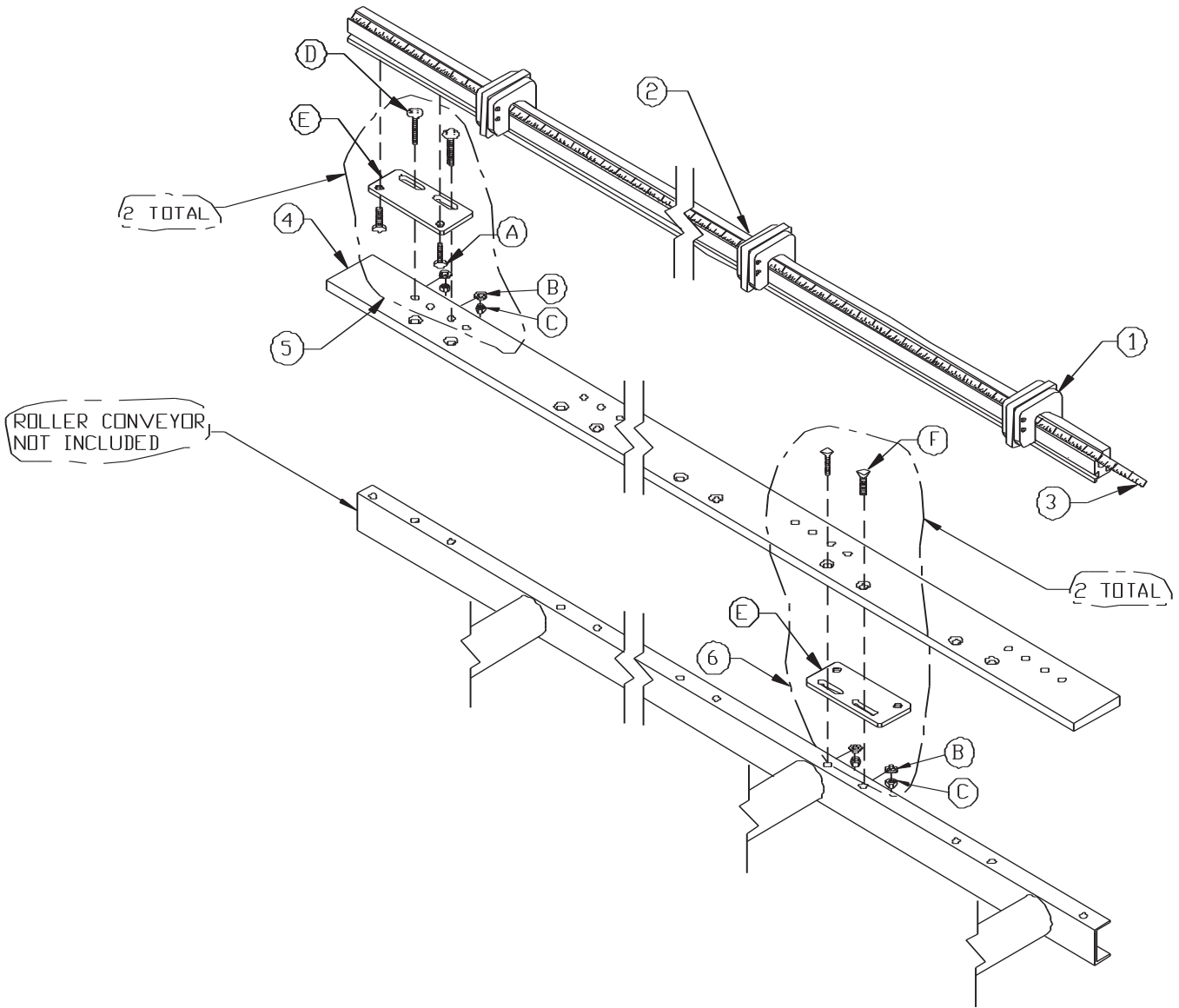


FIGURE 19

# Multi-Loc System Vertical Standard Left Hand

ITEM	PART #	DESCRIPTION	5'-STD	10'-STD	15'-STD	20'-STD
			QTY	QTY	QTY	QTY
1 3	029144	Multi-Loc Block STD LH	3	3	3	3
2	029201	Main Rail - 5 Foot	1			
2	029206	Main Rail - 10 Foot		1		
2	029201-029206-029173	Main Rail - 15 Foot			1	
2	029206-(2 pcs)-029173	Main Rail - 20 Foot				1
2	029206-(2 pcs)-029201-029173	Main Rail - 25 Foot				
3	029220	Left Hand Tape 1/2 x 12	1	1		
3	029233	Left Hand Tape 1/2 x 40			1	1
5	029215	Rail Mounting Bracket Complete	2	3	3	4
5A	130107	5/16-18 x 1 FSHCS	4	6	6	8
5 & 6B	114011	5/16 Washer	4	6	6	8
5 & 6C	108011	5/16 Hex Nut	4	6	6	8
5D	130110	Carriage Bolt 5/16-18 x 2-1/2	4	6	6	8
5E	029217	Rail Mounting Bracket	2	3	3	4
6	029213	Conveyor Mounting Bracket Complete	2	3	3	4
6E	029217	Conveyor Mounting Bracket	2	3	3	4
6F	130107	5/16 x 18 x 1 FSHCS	4	6	6	8

## Complete Left Hand Assemblies

5 Foot LH Multi-Loc Vertical - STD

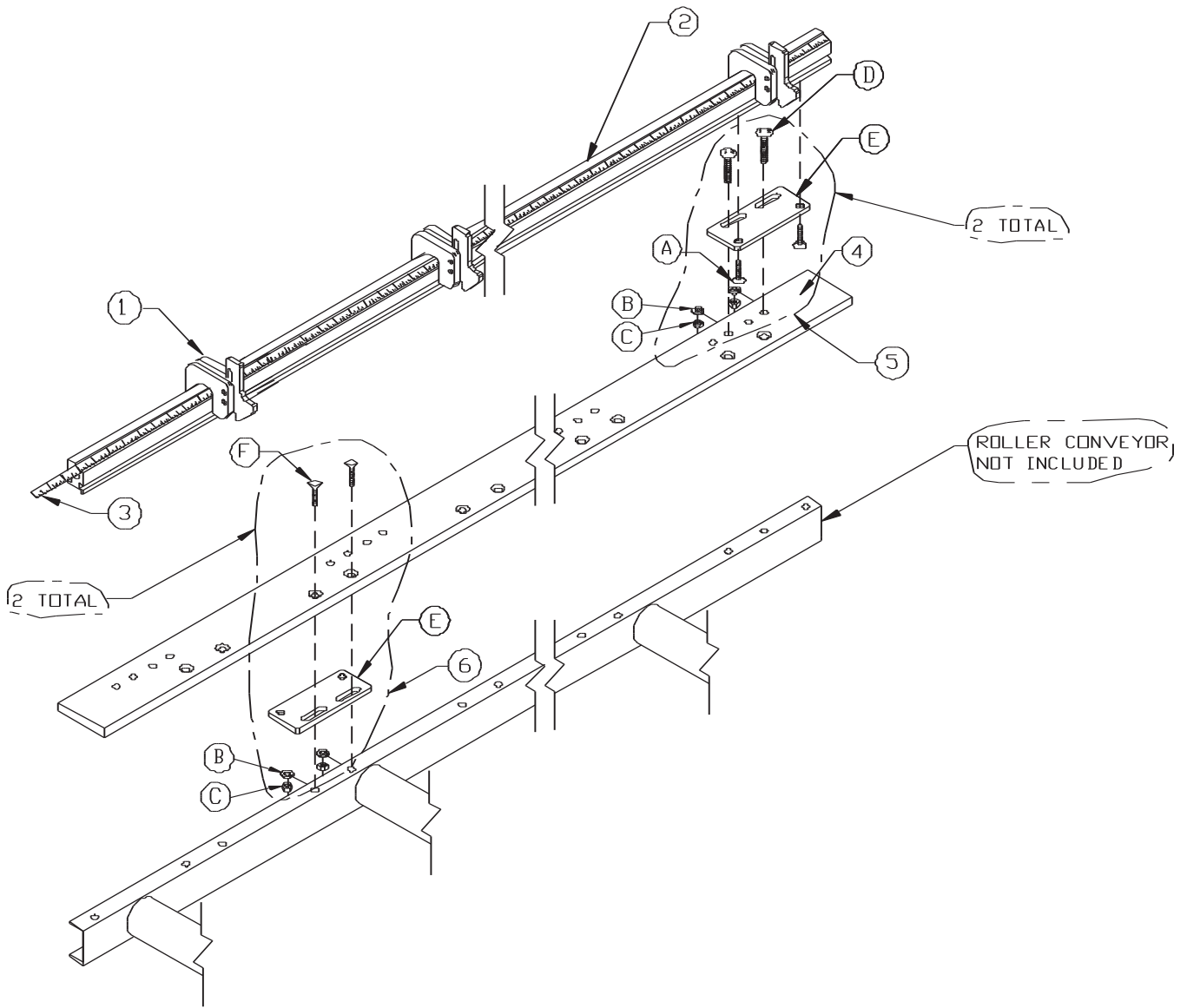
10 Foot LH Multi-Loc Vertical - STD

15 Foot LH Multi-Loc Vertical - STD

20 Foot LH Multi-Loc Vertical - STD

25 Foot LH Multi-Loc Vertical - STD





**FIGURE 20**

# Multi-Loc System Vertical Standard Right Hand

ITEM	PART #	DESCRIPTION	5'-STD	10'-STD	15'-STD	20'-STD
			QTY	QTY	QTY	QTY
1	029146	Multi-Loc Block STD RH	3	3	3	3
2	029201	Main Rail - 5 Foot	1			
2	029206	Main Rail - 10 Foot		1		
2	029201-029206-029173	Main Rail - 15 Foot			1	
2	029206-(2 pcs)-029173	Main Rail - 20 Foot				1
2	029206-(2 pcs)-029201-029173	Main Rail - 25 Foot				
3	029226	Right Hand Tape 1/2 x 12	1	1		
3	029234	Right Hand Tape 1/2 x 40			1	1
4	029123	1/4 x 3 Spacer Rail 10 Foot 1/2		1	1-1/2	2
5	029215	Rail Mounting Bracket Complete	2	3	3	4
5A	130107	5/16-18 x 1 FSHCS	4	6	6	8
5 & 6B	114011	5/16 Washer	4	6	6	8
5 & 6C	108011	5/16 Hex Nut	4	6	6	8
5D	130110	Carriage Bolt 5/16-18 x 2-1/2	4	6	6	8
5E	029217	Rail Mounting Bracket	2	3	3	4
6	029213	Conveyor Mounting Bracket Complete	2	3	3	4
6E	029217	Conveyor Mounting Bracket	2	3	3	4
6F	130107	5/16 x 18 x 1 FSHCS	4	6	6	8

## Complete Right Hand Assemblies

5 Foot RH Multi-Loc Vertical - STD

10 Foot RH Multi-Loc Vertical - STD

15 Foot RH Multi-Loc Vertical - STD

20 Foot RH Multi-Loc Vertical - STD

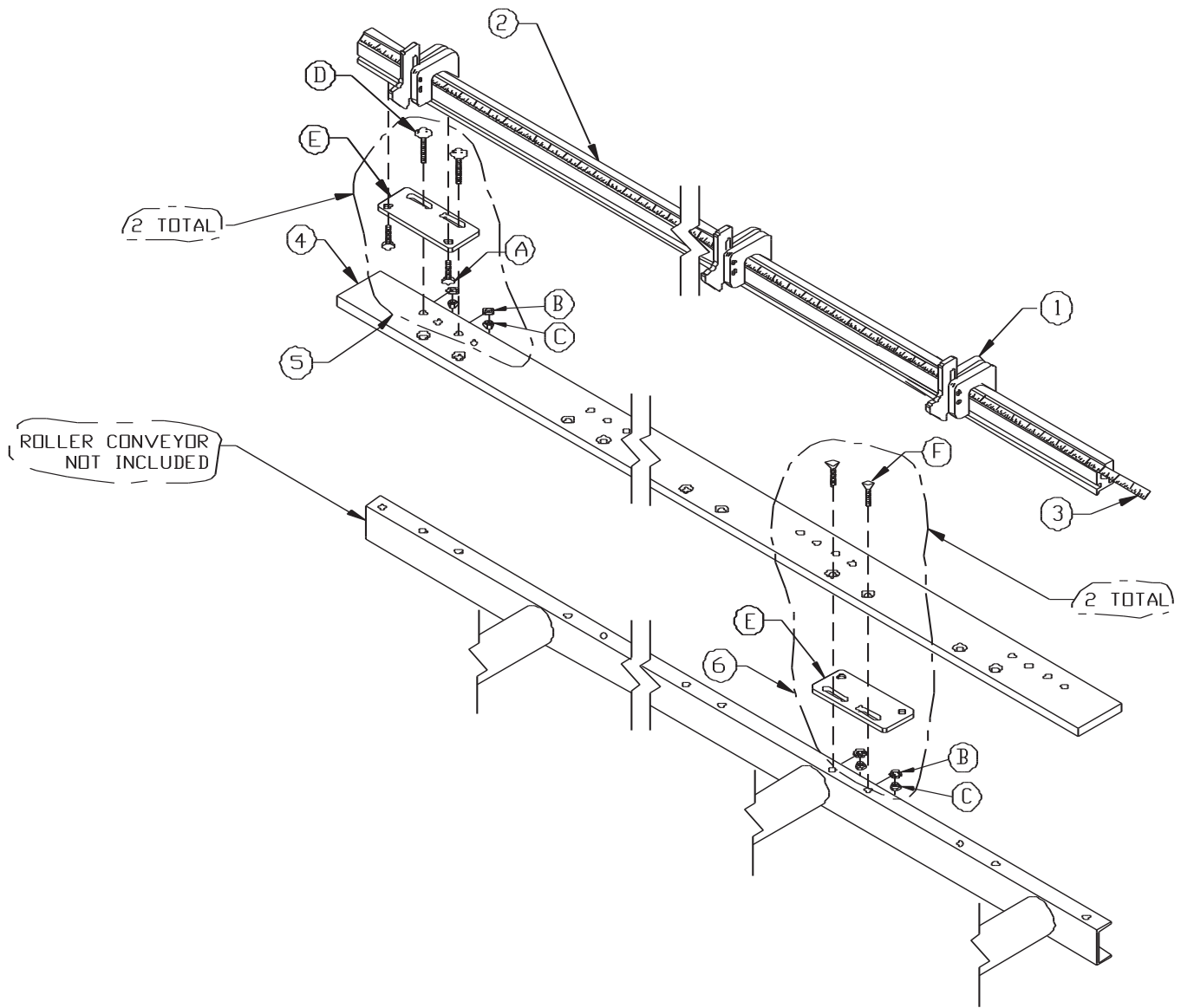


FIGURE 21

# Multi-Loc System Vertical Heavy Duty Left Hand

ITEM	PART #	DESCRIPTION	5'-STD	10'-STD	15'-STD	20'-STD
			QTY	QTY	QTY	QTY
1	029154	Multi-Loc Block STD LH	3	3	3	3
2	029201	Main Rail - 5 Foot	1			
2	029206	Main Rail - 10 Foot		1		
2	029201-029206-029173	Main Rail - 15 Foot			1	
2	029206-(2 pcs)-029173	Main Rail - 20 Foot				1
2	029206-(2 pcs)-029201-029173	Main Rail - 25 Foot				
3	029220	Left Hand Tape 1/2 x 12	1	1		
3	029233	Left Hand Tape 1/2 x 40			1	1
4	029123	1/4 x 3 Spacer Rail 10 Foot 1/2		1	1-1/2	2
5	029215	Rail Mounting Bracket Complete	2	3	3	4
5A	130107	5/16-18 x 1 FSHCS	4	6	6	8
5 & 6B	114011	5/16 Washer	4	6	6	8
5 & 6C	108011	5/16 Hex Nut	4	6	6	8
5D	130110	Carriage Bolt 5/16-18 x 2-1/2	4	6	6	8
5E	029217	Rail Mounting Bracket	2	3	3	4
6	029213	Conveyor Mounting Bracket Complete	2	3	3	4
6E	029217	Conveyor Mounting Bracket	2	3	3	4
6F	130107	5/16 x 18 x 1 FSHCS	4	6	6	8

## Complete Left Hand Assemblies

5 Foot LH Multi-Loc Sheet Metal - STD

10 Foot LH Multi-Loc Sheet Metal - STD

15 Foot LH Multi-Loc Sheet Metal - STD

20 Foot LH Multi-Loc Sheet Metal - STD

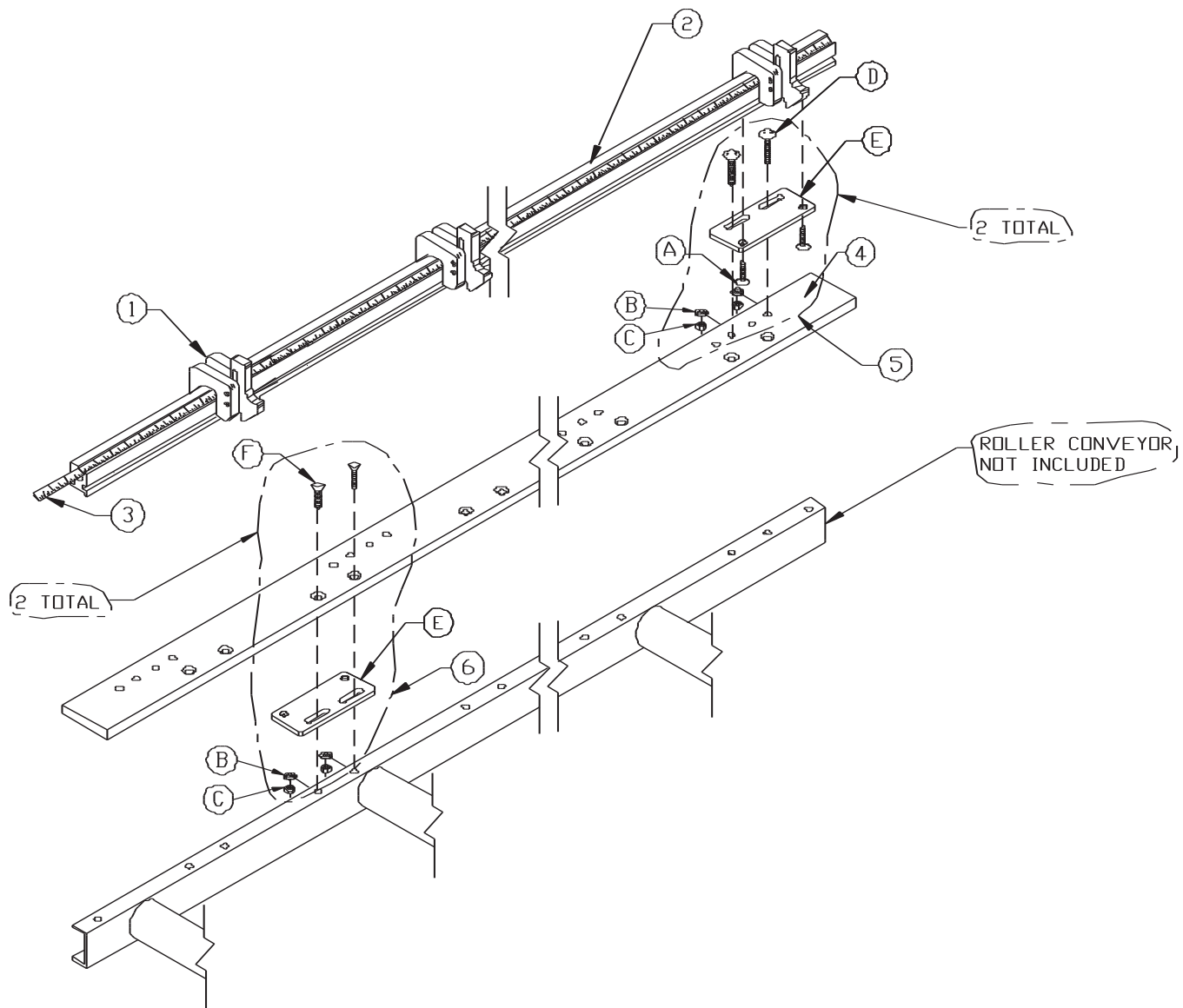


FIGURE 22

# Multi-Loc System Vertical Heavy Duty Right Hand

ITEM	PART #	DESCRIPTION	5'-STD	10'-STD	15'-STD	20'-STD
			QTY	QTY	QTY	QTY
1	029156	Multi-Loc Block STD RH	3	3	3	3
2	029201	Main Rail - 5 Foot	1			
2	029206	Main Rail - 10 Foot		1		
2	029201-029206-029173	Main Rail - 15 Foot			1	
2	029206-(2 pcs)-029173	Main Rail - 20 Foot				1
2	029206-(2 pcs)-029201-029173	Main Rail - 25 Foot				
3	029226	Right Hand Tape 1/2 x 12	1	1		
3	029234	Right hand Tape 1/2 x 40			1	1
4	029123	1/4 x 3 Spacer Rail 10 Foot 1/2		1	1-1/2	2
5	029215	Rail Mounting Bracket Complete	2	3	3	4
5A	130107	5/16-18 x 1 FSHCS	4	6	6	8
5 & 6B	114011	5/16 Washer	4	6	6	8
5 & 6C	108011	5/16 Hex Nut	4	6	6	8
5D	130110	Carriage Bolt 5/16-18 x 2-1/2	4	6	6	8
5E	029217	Rail Mounting Bracket	2	3	3	4
6	029213	Conveyor Mounting Bracket Complete	2	3	3	4
6E	029217	Conveyor Mounting Bracket	2	3	3	4
6F	130107	5/16 x 18 x 1 FSHCS	4	6	6	8

## Complete Right Hand Assemblies

5 Foot RH Multi-Loc Sheet Metal - STD

10 Foot RH Multi-Loc Sheet Metal - STD

15 Foot RH Multi-Loc Sheet Metal - STD

20 Foot RH Multi-Loc Sheet Metal - STD

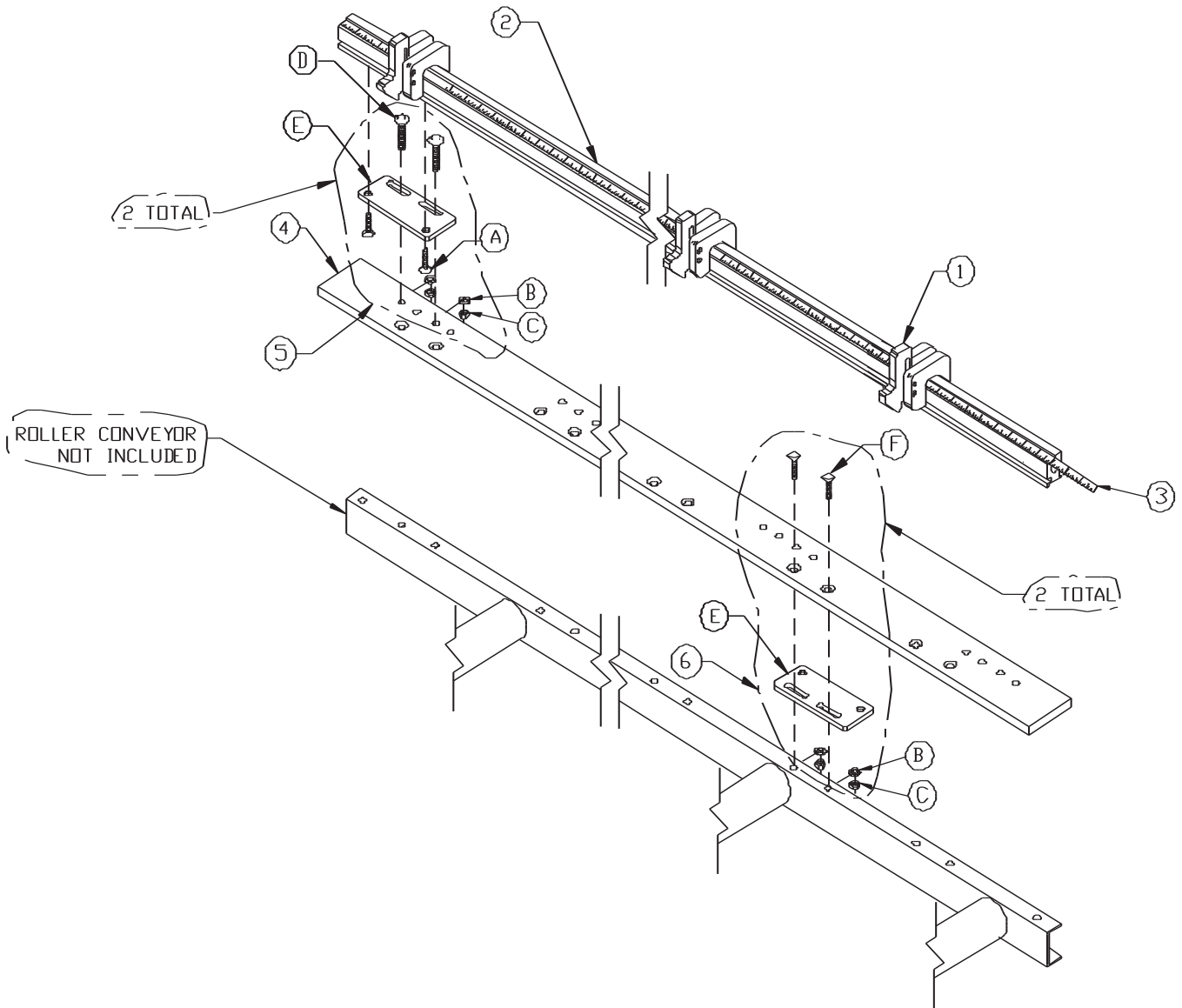


FIGURE 23

# RAIL SPLICE KIT

ITEM	PART #	DESCRIPTION
A	108011	5/16 x 18 Hex Nut
B	114011	5/16 Washer
C	029216	Rail Mounting Bracket
D	029180	1/2" Pin
E	130110	5/16 x 18 x 2-1/2
G	029172	Alignment Rail
H	029173	Complete Kit

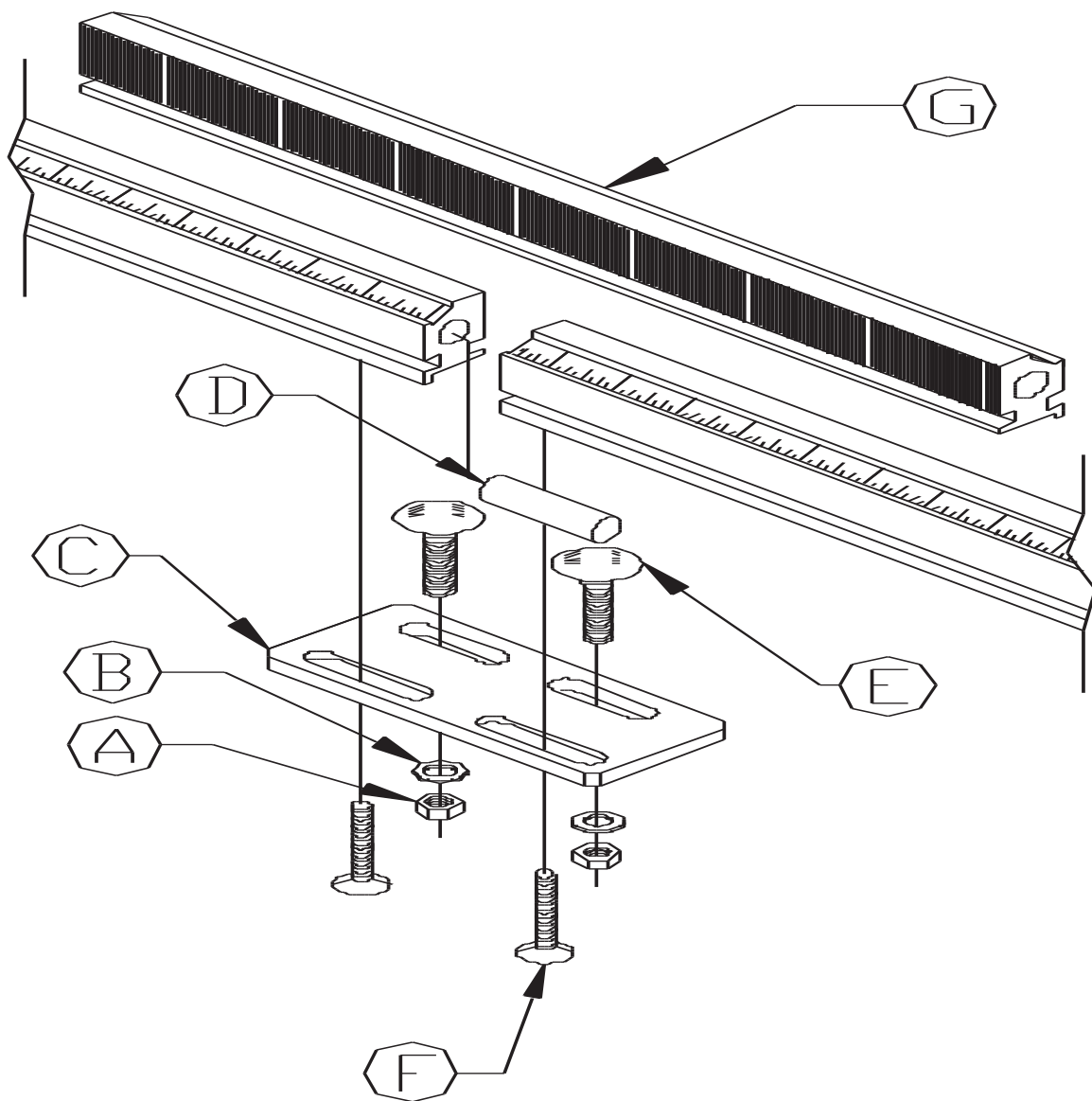


FIGURE 24



# CONVEYOR MOUNT REPACK

ITEM	PART #	DESCRIPTION	QTY
1	114011	5/16" Washer	2 (per) 4 Total
2	108011	5/16-18 Hex Nut	2 (per) 4 Total
3	029217	Rail Mount Bracket	1 (per) 2 Total
4	130107	5/16-18 x 1" FSHCS	2 (per) 4 Total

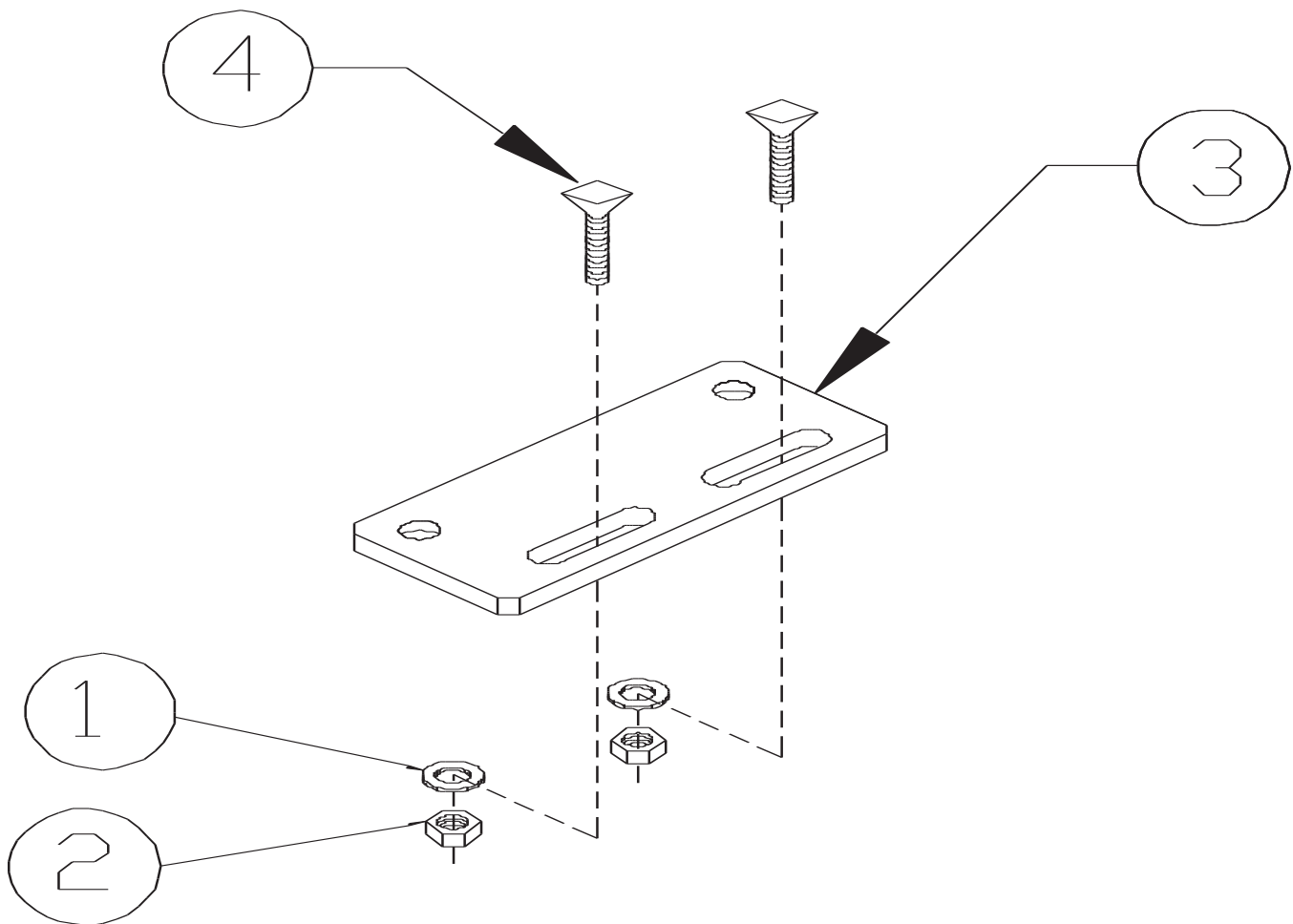


FIGURE 25

# 5' ROLLER CONVEYOR WITH LEGS

ITEM	PART #	DESCRIPTION	QTY
1	029244	Leg Roller Conveyor	2
2	029241	5" Roller Conveyor	1

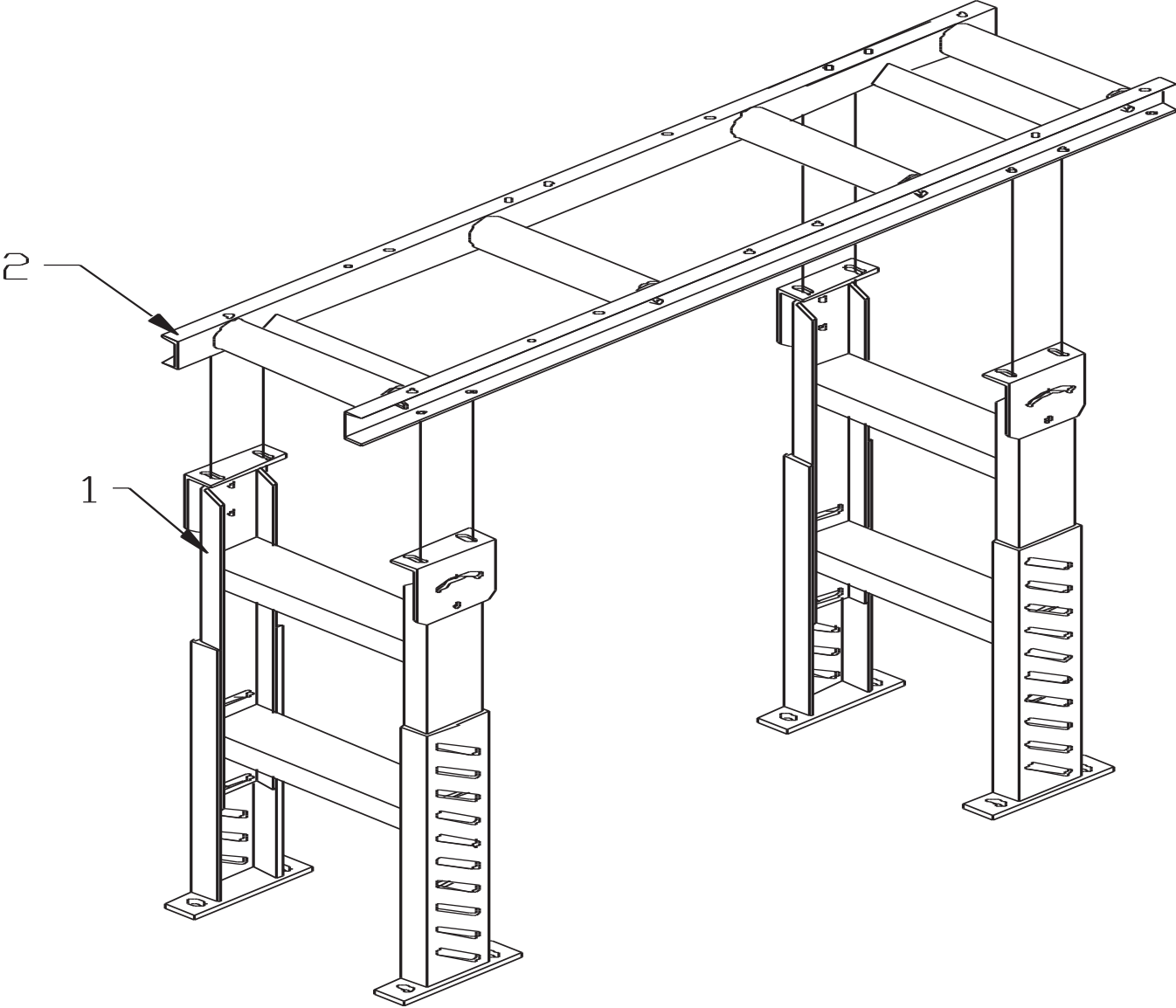


FIGURE 26

# 10' ROLLER CONVEYOR WITH LEGS

ITEM	PART #	DESCRIPTION	QTY
1	029244	Leg Roller Conveyor	2
2	029241	10' Roller Conveyor	1

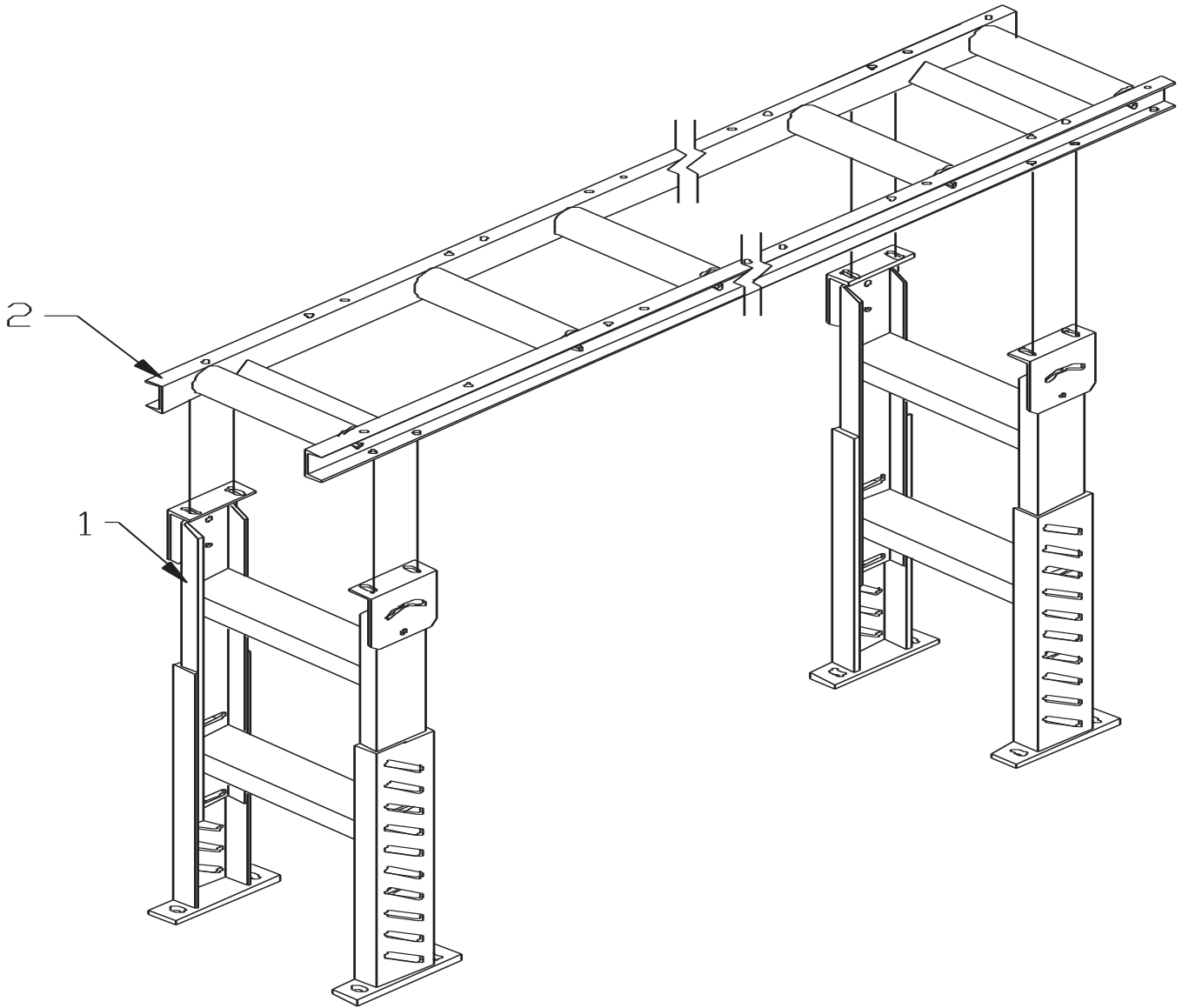


FIGURE 27