

SAMS

Instructions

For

Quick-Loc Stop

Systems

Scotchman Advanced Measuring Systems, Inc.

180 E. Highway 14 P.O. Box 850

Philip, S.D. 57567

Phone: 1-605-859-2542 1-800-843-8844

Fax: 1-800-843-5545

e-mail: sales@scotchman.com

www.scotchman.com

PRINTED NOVEMBER 2012

Set-Up Instructions for the Quick-Loc Stop System;

TOOLS NEEDED:

Power drill, 5/16 or 21/64" drill bit
two 1/2" wrenches, carpenter's square, rubber mallet,
center punch, hammer & tape measure

STEP 1: Remove the existing back fence of the saw.
(SEE FIGURE 1.) Do NOT remove it if you
are planning that the gauging system will
begin beyond the current fence.

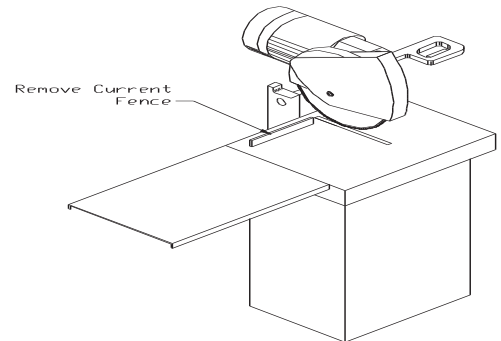


FIGURE 1

STEP 2: Draw a line on the table that is perpendicular
to the saw blade at the position where you want
the front of the gauging system to be.
(SEE FIGURE 2.)

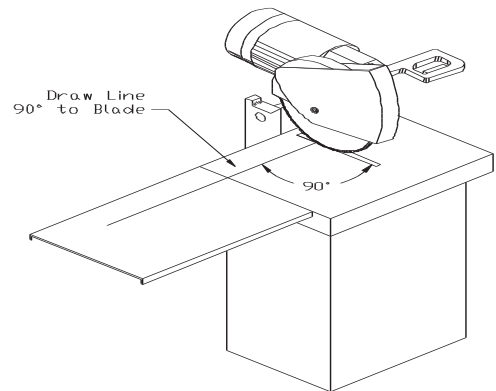


FIGURE 2

STEP 3: Set the Quick-Loc on the out-feed table with
the front aligned with the line. The rail should
be kept away from the saw blade by at least two
inches. A wooden block should be installed in
the gap, to safeguard against kick-back.
Failure to do this can lead to personal injury.
(SEE FIGURE 3.)

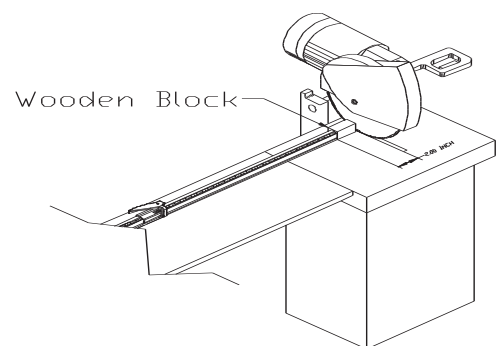


FIGURE 3

- STEP 4:** Use the center punch to mark the center of all of the slots.
- STEP 5:** Remove the system and drill holes at the center punch marks.
- STEP 6:** Realign the Quick-Loc System and install the 5/16 x 1-1/2 bolts in the holes. (DO NOT TIGHTEN.)
- STEP 7:** Set one stop approximately two feet from the saw blade. Set the distance roughly with a tape measure.
- STEP 8:** Tighten the bolts enough to hold the system for a few cuts. The system should be loose enough that it can be adjusted by using the rubber mallet.
- STEP 9:** Make a few cuts at different lengths. After each cut, check the length to assure that it is cut exactly at 1/16". Adjust, as necessary, with the rubber mallet.
- STEP 10:** Once the correct setting is obtained, tighten the bolts securely.

Instructions for Installing the Tape Measure

- Step 1:** Install the handle or stop at approximately 15-20 inches from the blade.
- Step 2:** Cut a piece of material at this setting. (Do not move the stop after you have made the cut.)
- Step 3:** Slide the tape measure under the stop in the groove provided for the tape, with the backer still attached to the tape measure.
- Step 4:** Remove 3" or 4" of the backer.
- Step 5:** Align the tape at the pointer to the length of the material in Step 2.
- Step 6:** Apply the uncovered portion of tape to the rail.
- Step 7:** Remove the stop of the slide handle out of the way.
- Step 8:** Remove the backer from the remainder of the tape.
- Step 9:** While using only light tension, apply the remainder of the tape.
- Step 10:** You could make an optional cut of material to check the first section.
- Step 11:** Cut the remaining sections at the first mark.
- Step 12:** Install the remaining sections by aligning the ends and making cuts to check the alignment.

Joining of Two Rails for Lengths Over 10'

To use the Scotchman Advanced Measuring System in lengths greater than 12', you will joint a 12' rail to a shorter rail. To insure that the "teeth" line up together, a separate shorter rail (supplied with your order) will be used to precisely space the rails.

SPECIAL TOOLS REQUIRED:

- 2) 4" C-clamps
- 1) 4' or longer straight edge

First, mount the first rail as described in the installation manual. Do not install the measuring tape yet. Make sure that you have securely fastened this rail to the saw's table.

Second, insert the alignment pin (D) into the first rail and place the second rail as close as possible to the first rail. Using two "C" clamps, clamp the shorter positioning rail (G) to the back of the first and second rails. To achieve good tooth alignment, you may need to move the second rail slightly. Keep the second rail as close as possible to the first rail.

Once you have made the correct alignment, and with the spacer rail still clamped to the rails, make sure that the second rail is straight in line with the first rail. Use the straight edge to confirm the alignment. With the rails aligned and straight, tighten the second rail to the saw's table or to the mounting plate, using the mounting kit pictured in Figure 5 below. Now you can install the tape measure.

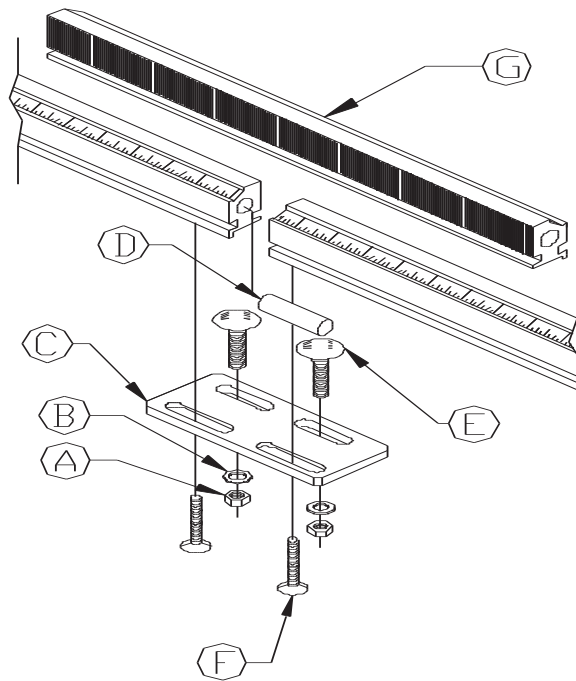


FIGURE 4

Quick-Loc Stop Accessories

Advanced Measuring Systems has designed several accessories to make your cut-off application easier, faster and more profitable.

Quick-Loc Extension

The Quick-Loc Extension is used for cut-off applications where the operator would like to cut several pieces together, at once. To use this device, simply attach it to the Quick-Loc Stop Assembly. Next, using a square, adjust the bolt at the base of the extension bracket to ensure that the bracket is square to the fence. Next, position the stop to the desired location, let it go and cut. It's that simple.

The stop on the Quick-Loc System requires some modification to enable the extension bracket to mount to it. AMS does this operation automatically when you purchase the extension bracket with the Quick-Loc Stop.

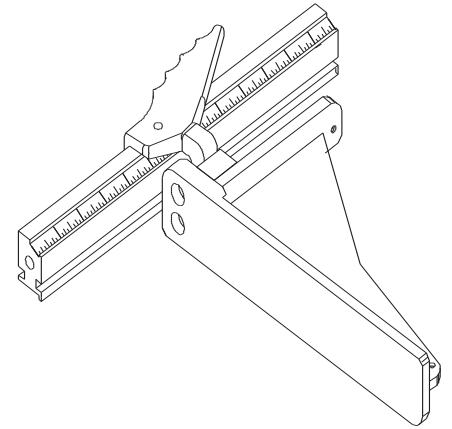


FIGURE 5

Fine Adjusting Knob

Advanced Measuring Systems has designed a fine adjusting knob to fit onto the Quick-Loc Stop. It is used for cut-off applications as fine as 1/64 on an inch. To use this device, set the length of the cut to the nearest 1/16". Next, pull out the fine adjusting knob and rotate it to the correct setting. Rotating it 90 degrees removes 1/64" from the original setting. Rotating the fine adjusting knob another 90 degrees removes another 1/64", for a total removal of 1/32". Rotating it another 90 degrees removes another 1/64" for a total removal of 3/64" from the original setting. To set the fine adjusting knob back to the original setting, rotate it another 90 degrees. For the operator's convenience, we have marked the settings on the fine adjusting knob. This way, they can check the setting anytime they choose. The fine adjusting knob is available in a left-hand or right-hand version, 1/16".

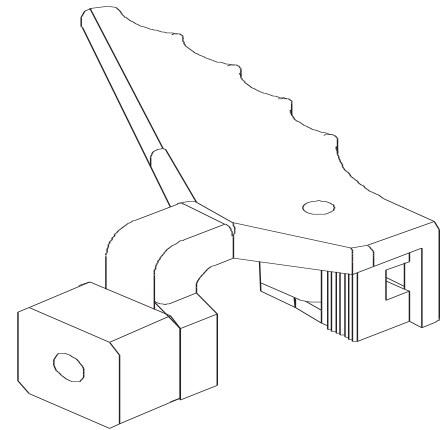


FIGURE 6

Quick-Loc Stop Accessories

Miter Attachment

A miter attachment is available for those who do cut-off work with miter saws. The miter attachment is adjustable from 22-1/2 degrees to 45 degrees. All you need to do is loosen the screws and slide the miter attachment to the desired position, lock down the screws and you are ready to go. The point of the cut does not touch anything. The flat part of the mitered cut gently butts up to a large 1" radius. The large radius eliminates the possibility of damaging the mitered cut. The one miter adapter fits both left hand and right hand handles.

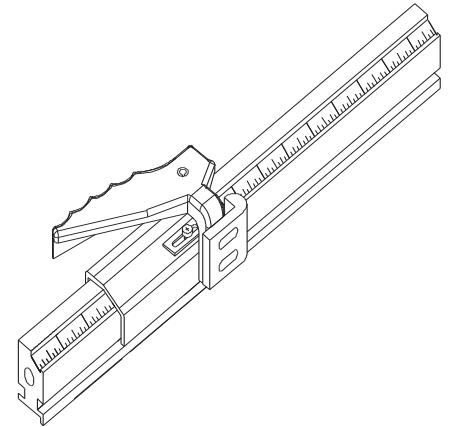


FIGURE 7

Multi-Loc Adapter

For operators that like the convenience of the Multi-Loc stop blocks but feel they would like the speed of the Quick-Loc Stop's slide handle assembly, Advanced Measuring Systems has designed an adapter block for the Quick-Loc handle assembly. With the adapter block attached to the Quick-Loc handle, simply slip the adapted slide handle assembly on the rail. Next, position the stop to the desired location, let it go and cut. It's that simple. The adapter block extends the reach of the slide handle past the spacer bar. The adapter block is universal. By simply flipping the block to the correct side, one block can work on a left-handed or right handed system and on existing Multi-Loc Stop Systems.

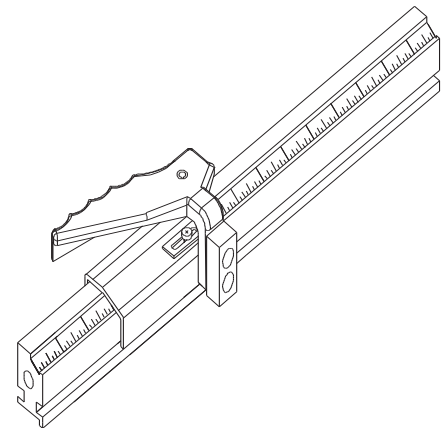


FIGURE 8

Quick-Loc Left Hand Stop Assembly

ITEM	PART #	DESCRIPTION	QTY
1	141517	Roll Pin	1
2	029231	LH Quick-Loc Handle	1
3	133313	#8-32 Phillips Head x 3/16"	1
4	029218	Pointer Quick-Loc Handle	2
5	029214	Spring Quick-Loc Handle	1
6	029210	LH Slide Quick-Loc N/W	1
7	029230	Complete Assembly	1

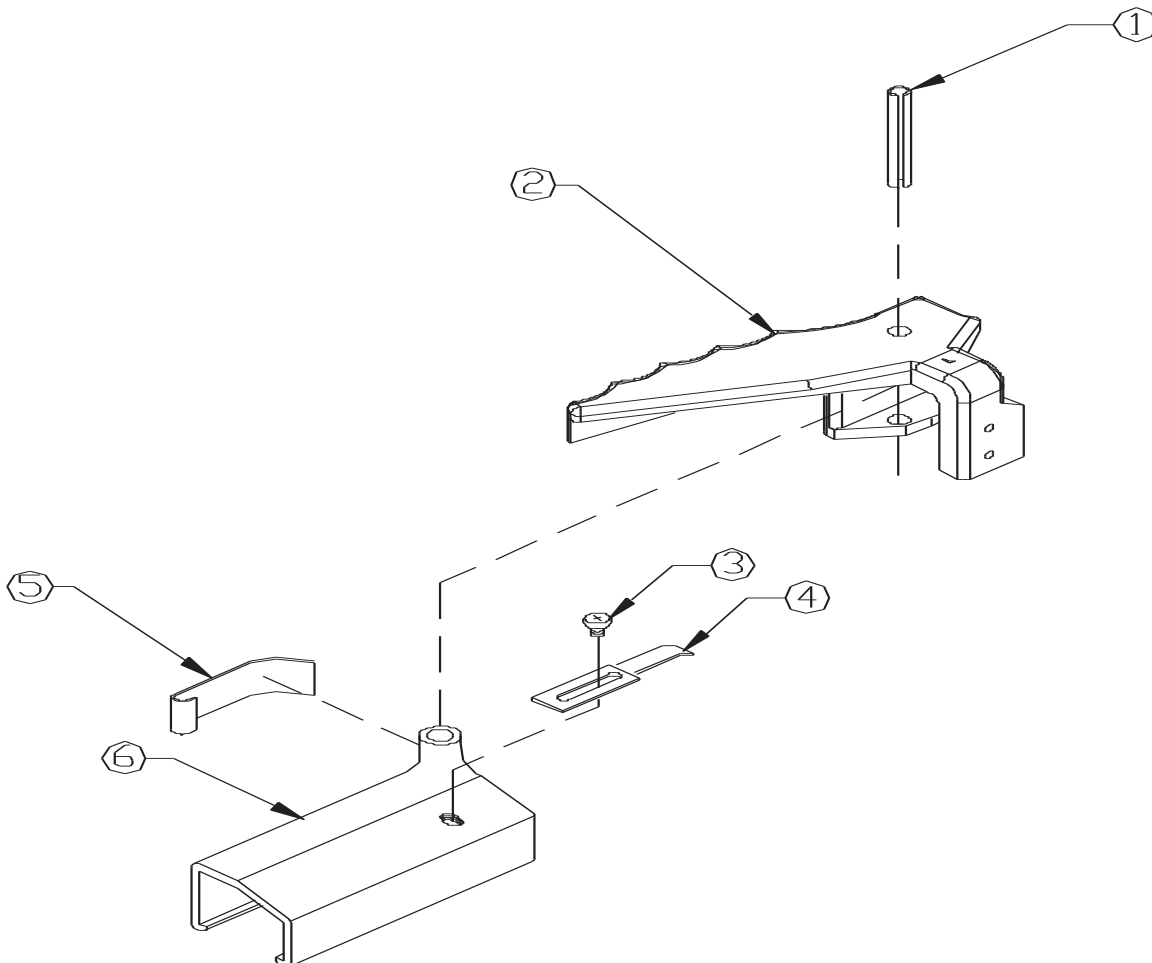


FIGURE 9

Quick-Loc Right Hand Stop Assembly

ITEM	PART #	DESCRIPTION	QTY
1	141517	Roll Pin	1
2	029224	RH Quick-Loc Handle	1
3	133313	#8-32 Phillips Head x 3/16"	1
4	029218	Pointer Quick-Loc Handle	1
5	029214	Spring Quick-Loc Handle	1
6	029222	RH Slide Quick-Loc N/W	1
7	029232	Complete Assembly	1

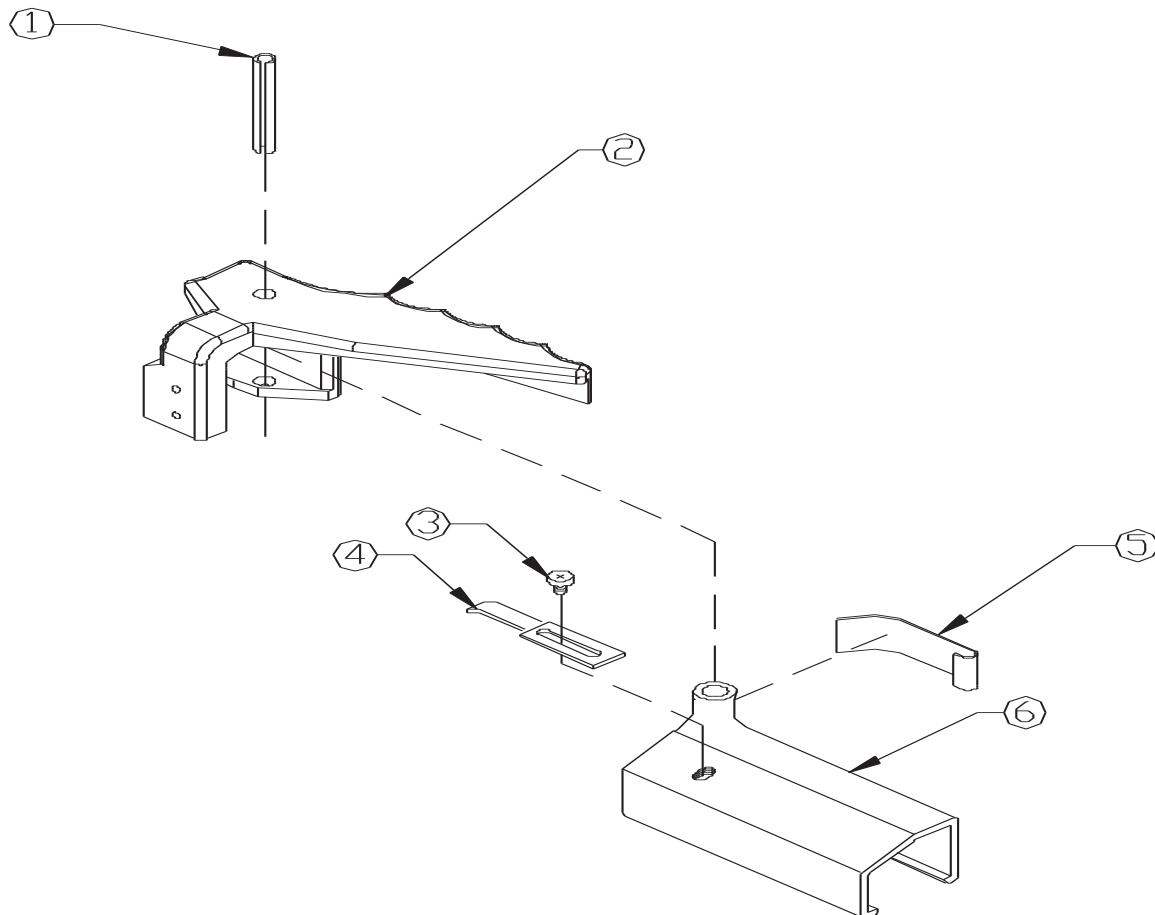


FIGURE 10

RAIL SPLICE KIT (FOR RAILS OVER 10')

ITEM	PART #	DESCRIPTION
A	108011	5/16 x 18 Hex Nut
B	114011	5/16 Washer
C	029216	Rail Mounting Bracket
D	029180	1/2" Pin
E	130110	5/16 x 18 x 2-1/2
G	029172	Alignment Rail
H	029173	Complete Kit

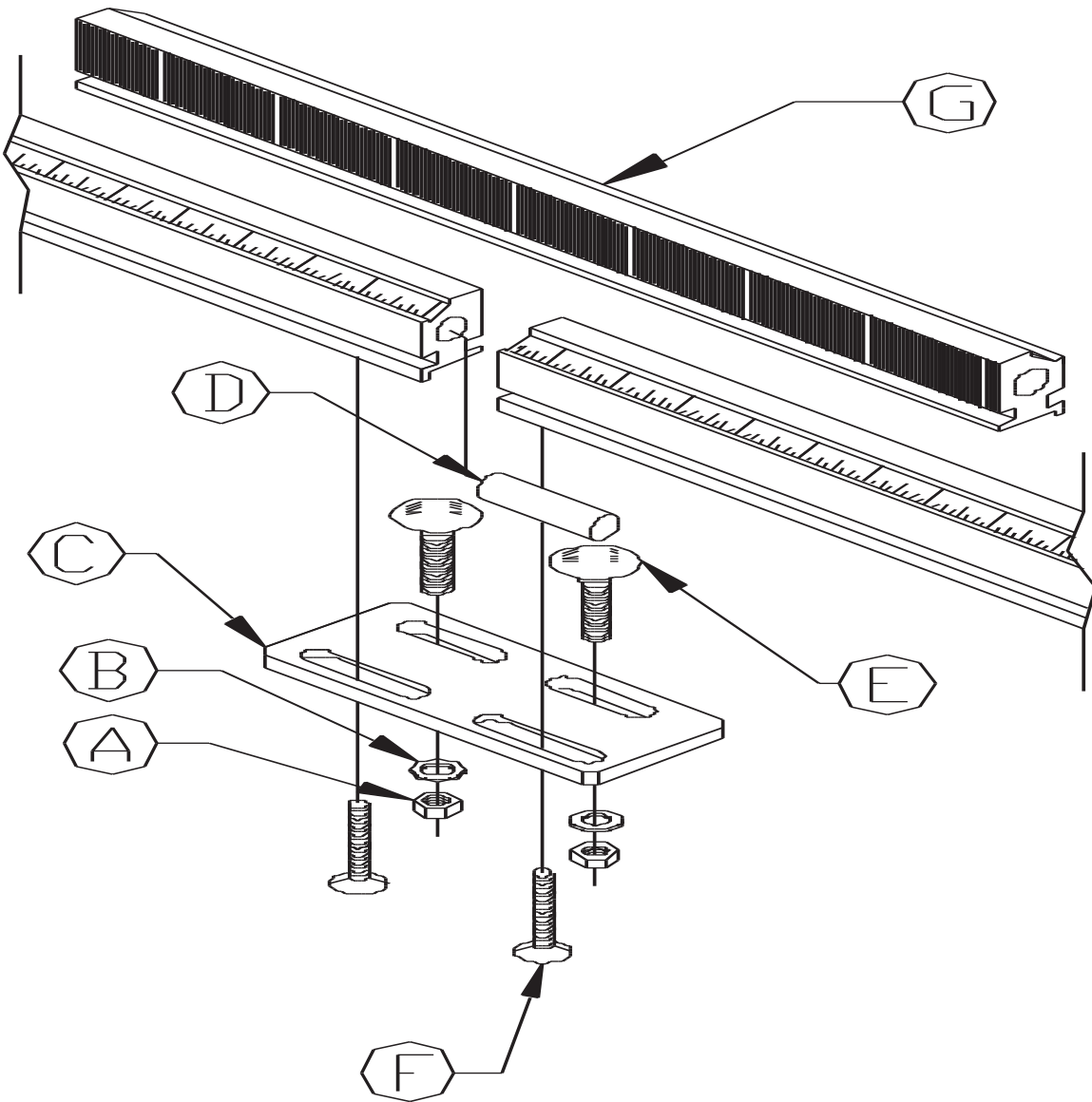


FIGURE 11

THIS PAGE LEFT BLANK INTENTIONALLY.

Quick-Loc System Standard Left Hand

ITEM	PART #	DESCRIPTION	5'-STD QTY	10'-STD QTY	15'-STD QTY	20'-STD QTY	25'-STD QTY
1	029201	Main Rail - 5 Foot	1				
1	029206	Main Rail - 10 Foot		1			
1	029201-029206-029173	Main Rail - 15 Foot			1		
1	029206-2 pcs-029173	Main Rail - 20 Foot				1	
1	029206-2 pcs-029201-029173	Main Rail - 25 Foot					1
2	029232	Left Hand Quick-Loc Ass'y	1	1	1	1	1
3	029226	Left Hand Tape 1/2 x 12	1	1			
3	029234	Left Hand Tape 1/2 x 40	1	1	1		
4	029215	Rail Mounting Bracket Assembly	2	3	3	5	7
4A	108011	5/16 Hex Nut	4	6	6	10	14
4B	114011	5/16 Washer	4	6	6	10	14
4C	130110	Carriage Bolt 5/16-18 x 2-1/2	4	6	6	10	14
4D	130107	5/16-18 x 1 FSHCS	4	6	6	10	14
4E	029217	Mounting Bracket	2	3	3	15	17

Complete Left Hand Assemblies

FOR FLAT TABLES

029500	5'	LH
029503	10'	LH
029505	15'	LH
029506	20'	LH
029507	25'	LH

FOR ROLLER CONVEYORS

029600	5'	LH
029603	10'	LH
029605	15'	LH
029606	20'	LH
029607	25'	LH

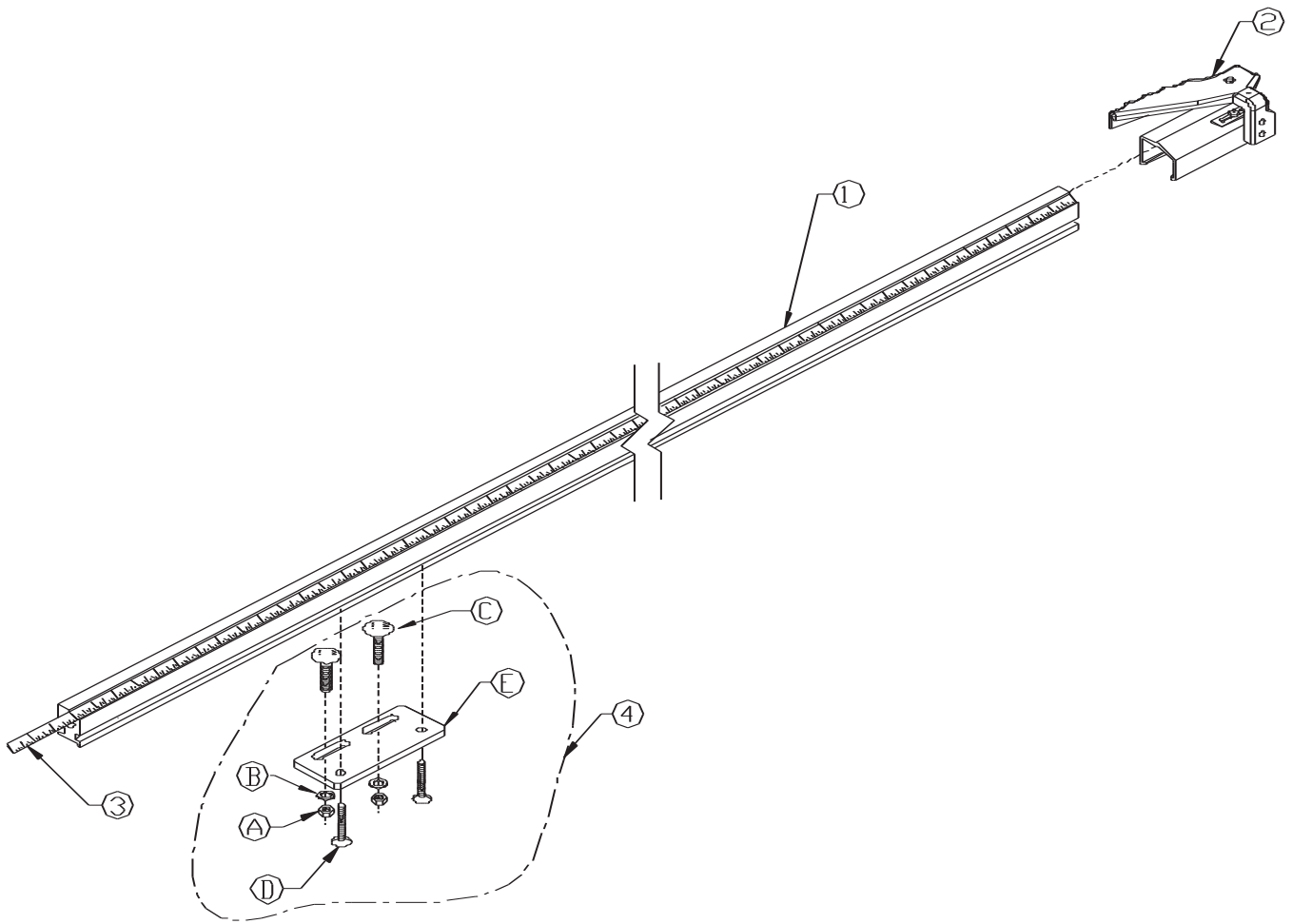


FIGURE 12

Quick-Loc System Standard Right Hand

ITEM	PART #	DESCRIPTION	5'-STD QTY	10'-STD QTY	15'-STD QTY	20'-STD QTY	25'-STD QTY
1	029201	Main Rail - 5 Foot	1				
1	029206	Main Rail - 10 Foot		1			
1	029201-029206-029173	Main Rail - 15 Foot			1		
1	029206-2 pcs-029173	Main Rail - 20 Foot				1	
1	029206-2 pcs-029201-029173	Main Rail - 25 Foot					1
2	029232	Right Hand Quick-Loc Assembly	1	1	1	1	1
3	029226	Right Hand Tape 1/2 x 12	1	1			
3	029234	Right Hand Tape 1/2 x 40	1	1	1		
4	029215	Rail Mounting Bracket Assembly	2	3	3	5	7
4A	108011	5/16 Hex Nut	4	6	6	10	14
4B	114011	5/16 Washer	4	6	6	10	14
4C	130110	Carriage Bolt 5/16-18 x 2-1/2	4	6	6	10	14
4D	130107	5/16-18 x 1 FSHCS	4	6	6	10	14
4E	029217	Mounting Bracket	2	3	3	15	17

Complete Right Hand Assemblies

FOR FLAT TABLES

029510 5' RH

029513 10' RH

029515 15' RH

029516 20' RH

029517 25' RH

FOR ROLLER CONVEYORS

029610 5' RH

029613 10' RH

029615 15' RH

029616 20' RH

029617 25' RH

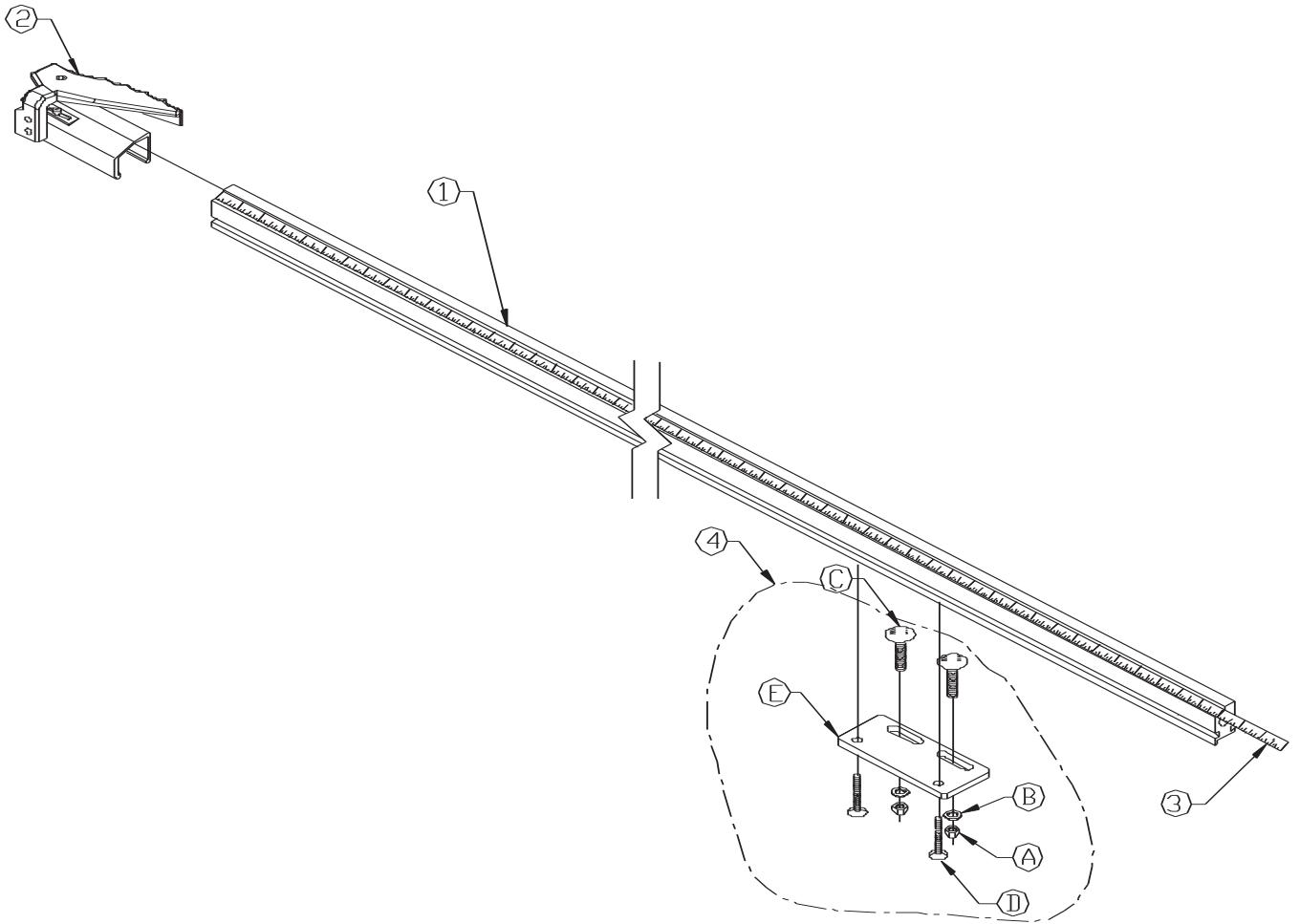


FIGURE 13

Quick-Loc Left Hand Extension - 12" x 2"

ITEM	PART #	DESCRIPTION	QTY
1	029184	5/16"-18 x 1-1/2" Shoulder	1
2	029183	1/4"-20 x 2-1/2"	1
3	108010	1/4"-20 Hex Nut	2
4	029181	12" x 2" Exten. Cast Mach.	1
5	108011	5/16"-18 Hex Nut	1
6	114010	1/4" Flat Washer	1
7	029185	3/8" SS Lock Washer	1
8	029186	Adjustment Block Q/L Ext	1
9	120027	1/4"-20 x 1" BHSCS	2
10	029182	1/4"-20 x 1-1/2"	1
11	029114	Q-L Arm 10" Reach	1
11A	201110	M-6 x 12 HHCS	1
12	029126	Q-L Arm 10" Reach	1
13	029100	Complete Extension	

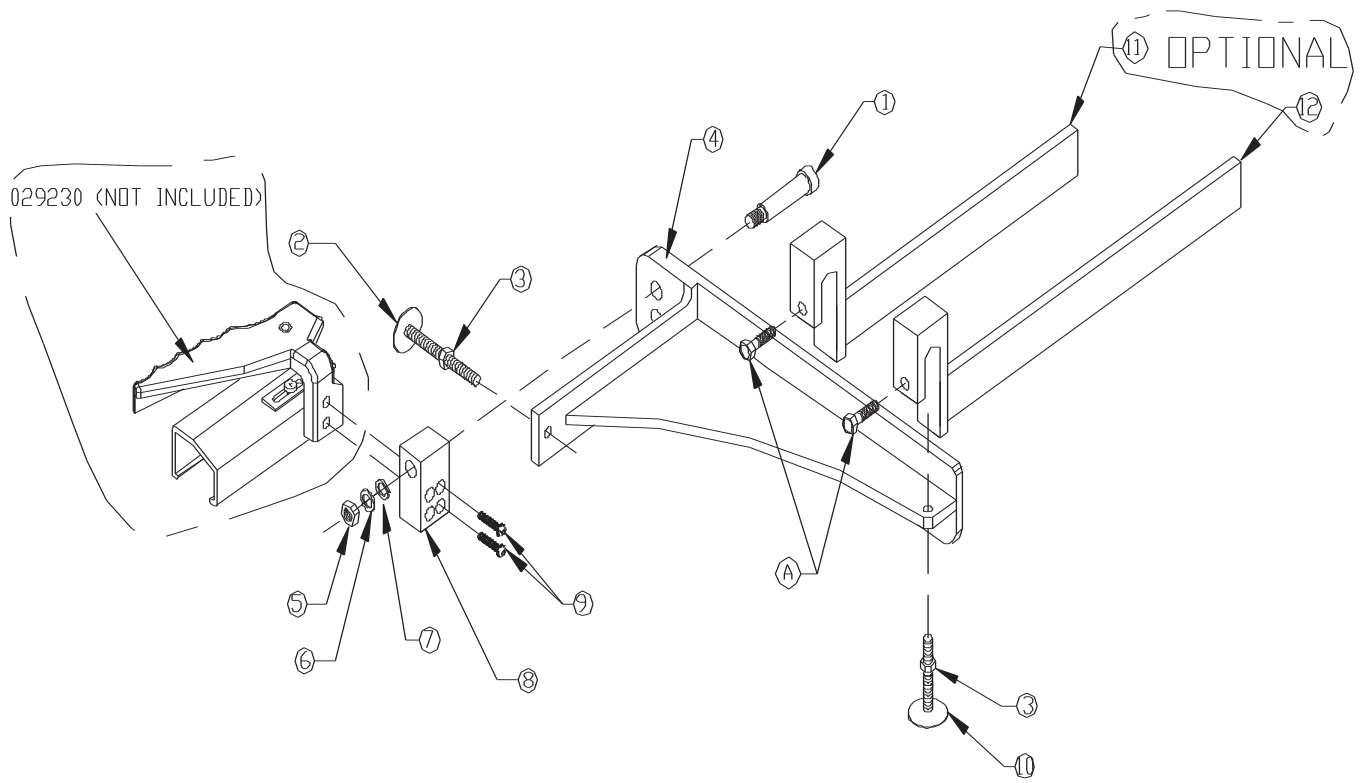


FIGURE 14

Quick-Loc Right Hand Extension - 12" x 2"

ITEM	PART #	DESCRIPTION	QTY
1	029184	5/16"-18 x 1-1/2" Shoulder	1
2	029183	1/4"-20 x 2-1/2"	1
3	108010	1/4"-20 Hex Nut	2
4	029181	12" x 2" Exten. Cast Mach.	1
5	108011	5/16"-18 Hex Nut	1
6	114010	1/4" Flat Washer	1
7	029185	3/8" SS Lock Washer	1
8	029186	Adjustment Block Q/L Ext	1
9	120027	1/4"-20 x 1" BHSCS	2
10	029182	1/4"-20 x 1-1/2"	1
11	029114	Q-L Arm 10" Reach	1
11A	201110	M-6 x 12 HHCS	1
12	029126	Q-L Arm 10" Reach	1
13	029102	Complete Extension	

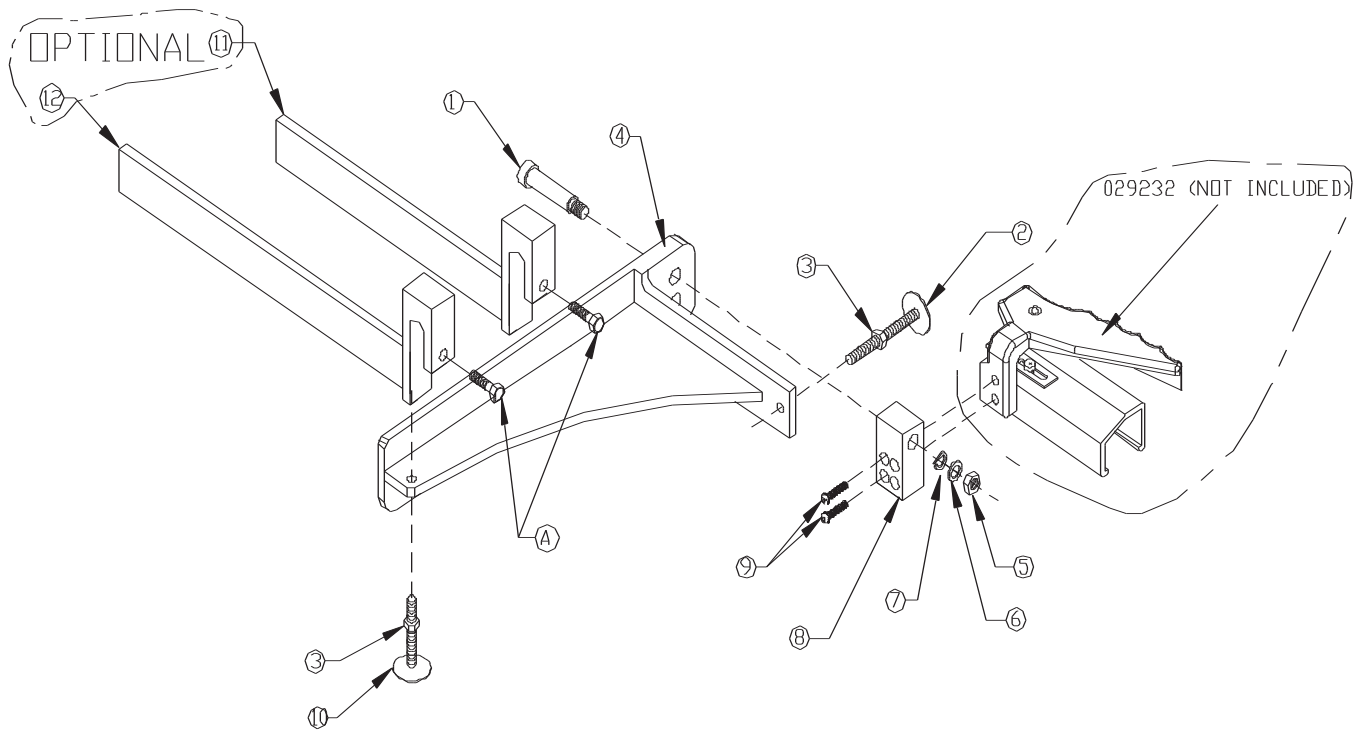


FIGURE 15

Optional Arm Extension

ITEM	PART #	DESCRIPTION	QTY
1	101007	HH Bolt 5/8"	1
2	129105	#20 SH x 1/2"	2
3	029105	10" Arm Ext. QL	1
4	120027	1/4"-20 Buttonhead x 1"	2
5	029104	Complete Extension	

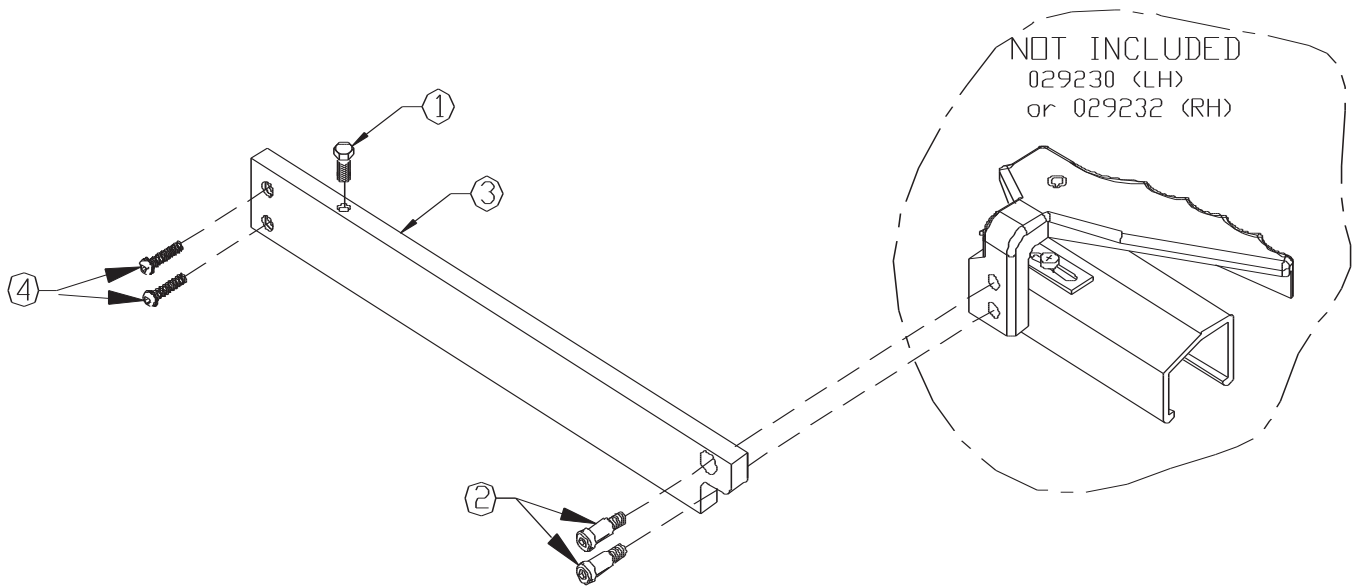


FIGURE 16

Optional Multi-Loc Adapter For Quick-Loc

ITEM	PART #	DESCRIPTION	QTY
1	121005	1/4"-20 x 1/2" SHCS	2
2	029107	Multi-Loc Adapter	1
3	029106	Complete Adapter	

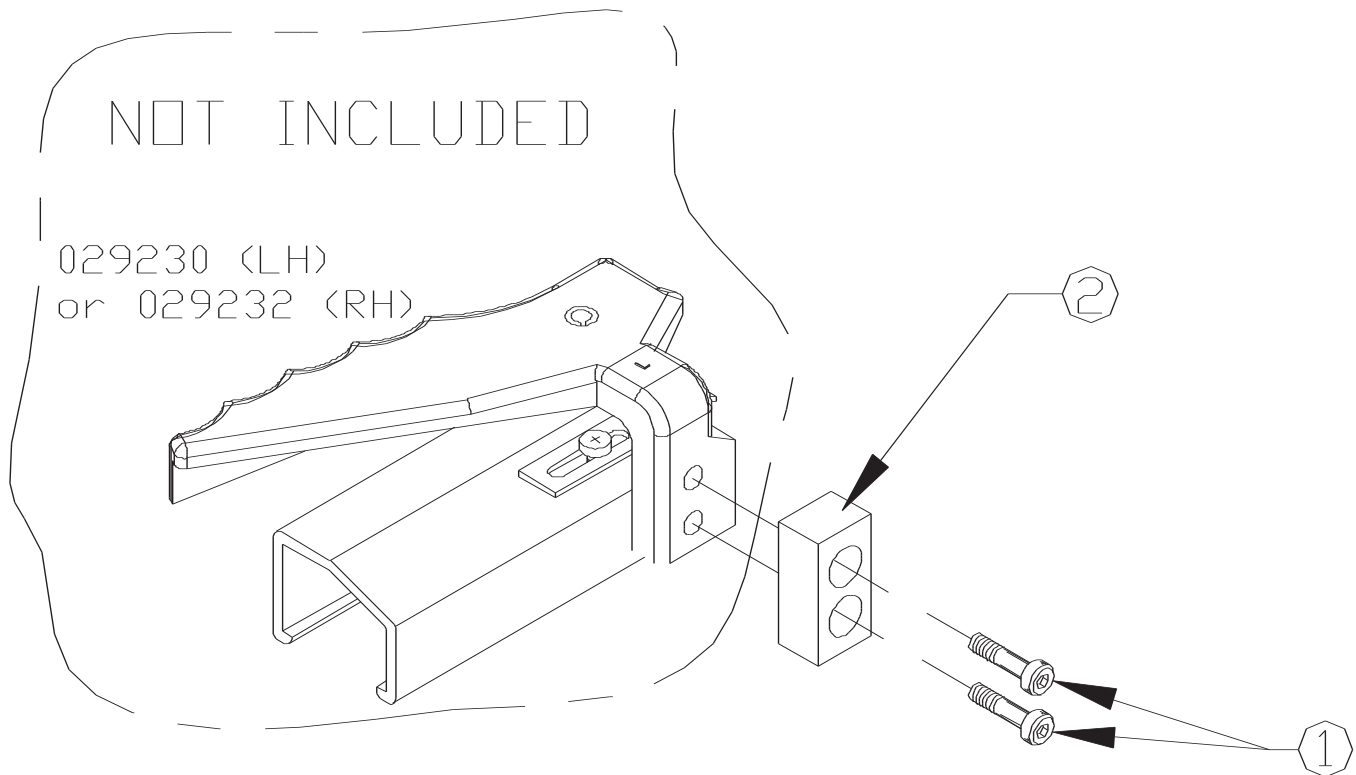


FIGURE 17

Quick-Loc Miter Attachment

ITEM	PART #	DESCRIPTION	QTY
1	029109	Plate Fine Adj.	1
2	120027	1/4"-20 Buttonhead x 1"	2
3	029108	Complete Miter Attachment	

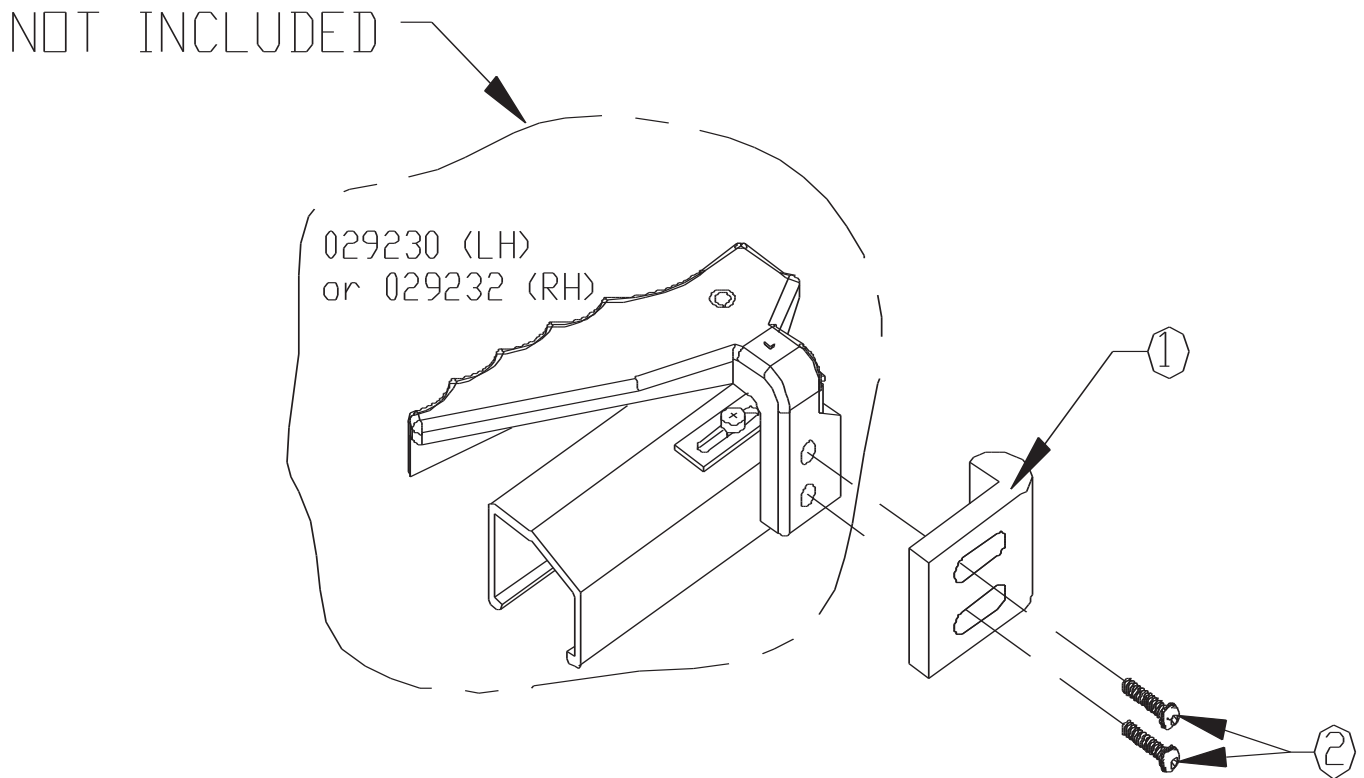


FIGURE 18

Quick-Loc Fine Adjustment Assembly

ITEM	PART #	DESCRIPTION	QTY
1	029191	Plate Fine Adj.	1
2	120026	1/4"-20 SHCS Low Profile x 1/2"	2
3	029192	Fine Adj. Housing	1
4	029190	Spring	1
5	029193	#10 Shoulder Screw x 1/2"	1
6	029110	Complete Fine Adjustment Assembly	

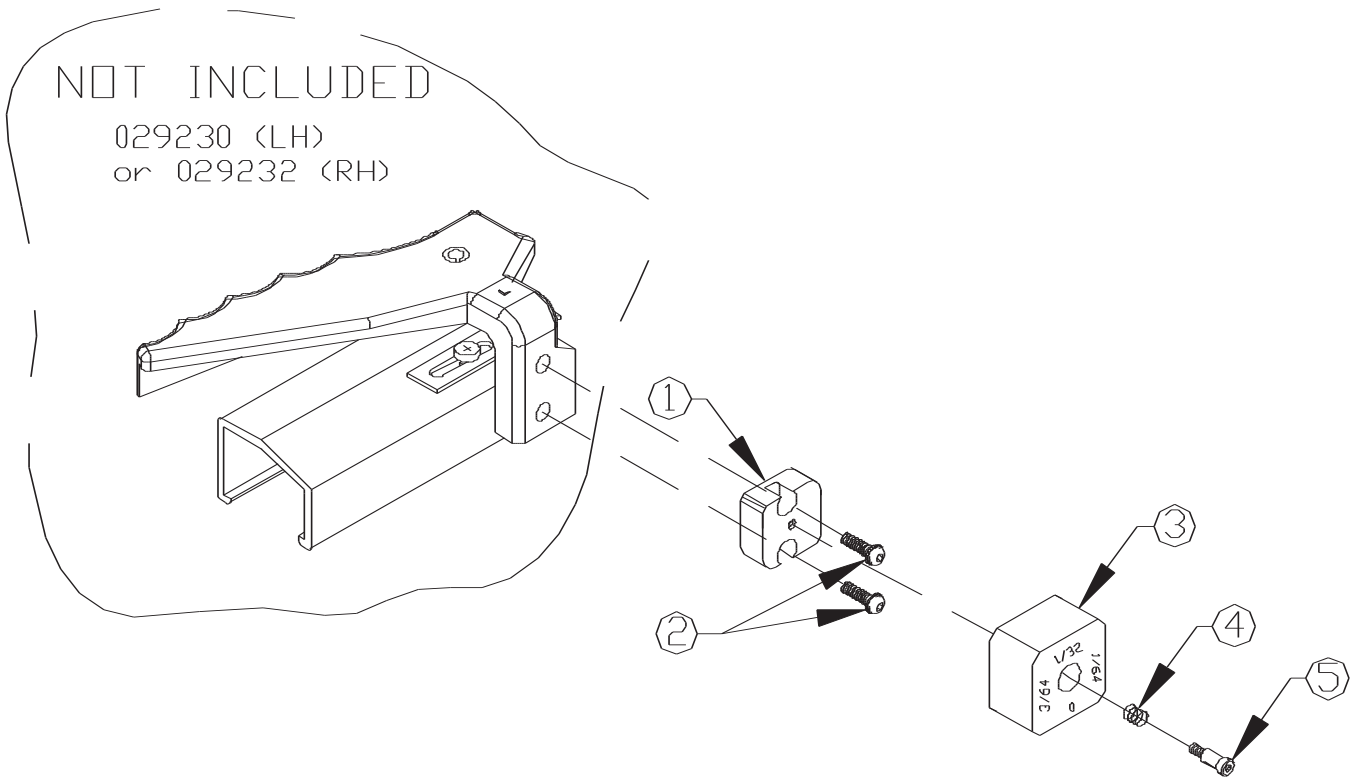


FIGURE 19

Quick-Loc Release Adapter

ITEM	PART #	DESCRIPTION	QTY
1	029117	Cam Mount	1
2	120026	1/4"-20 SHCS Low Profile x 1/2"	2
3	029118	Cam Follower	1
4	029119	Cam	1
5	129105	5/16 x 3/8 x 3/4 Shoulder Bolt	1
6	029112	Complete Release Adapter	

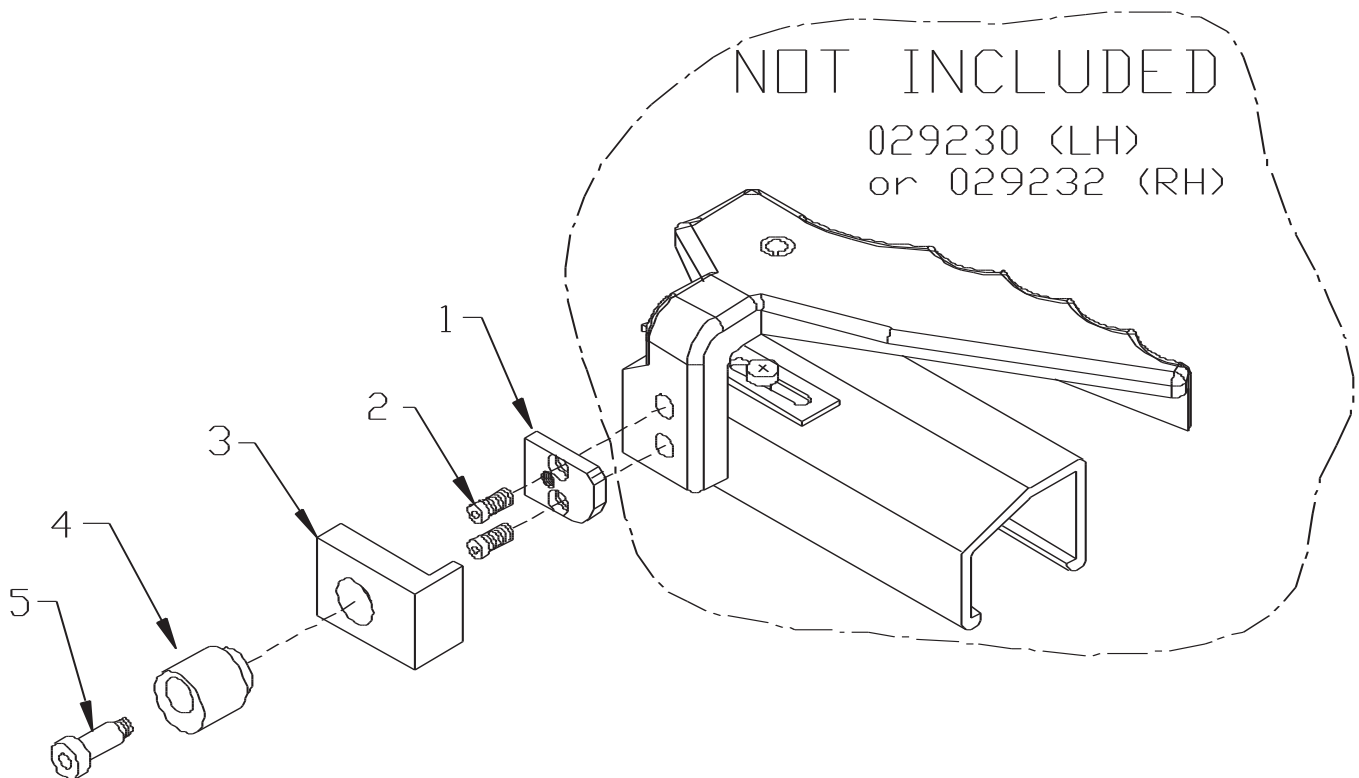


FIGURE 20

5' Conveyor W/Left Hand Quick-Loc

ITEM	PART #	DESCRIPTION	QTY
1	029244	Leg Roller Conveyor	2
2	029241	5' Roller conveyor	1
3	029220	LH Tape - 12'	1
4	029230	LH Quick-Loc Assembly	1
5	029201	5' Main Rail	1
6	029174	Q/L Conveyor Mount Repack	2
6A	029175	Roller Conveyor Bracket	1 (Per) 2 Total
6B	130107	5/16-18 x 1 FSHCS	2 (Per) 4 Total
6C	130212	3/8-16 x 1-1/4" C-Bolt	1 (Per) 2 Total
6D	114011	5/16" Flat Washer	1 (Per) 2 Total
6E	108012	3/8-16 Hex Nut	1 (Per) 2 Total
7	029247	Complete Assembly	

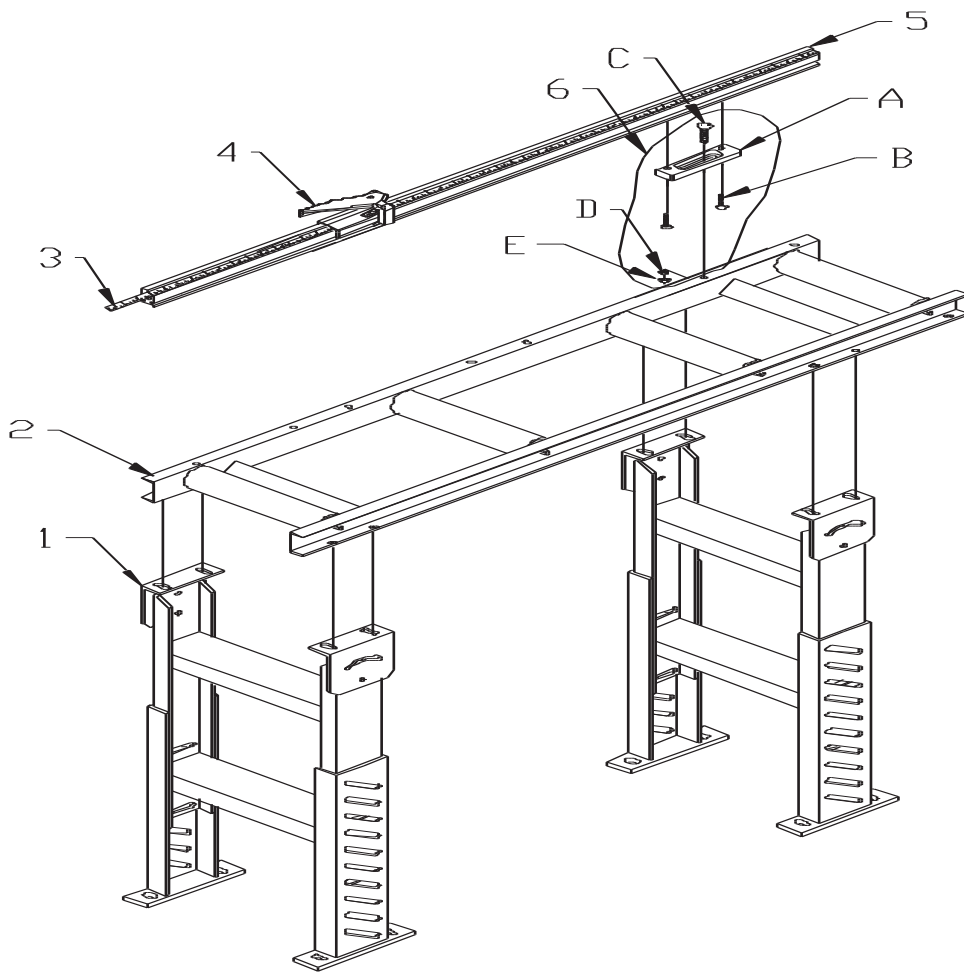


FIGURE 22

10' Conveyor W/Left Hand Quick-Loc

ITEM	PART #	DESCRIPTION	QTY
1	029244	Leg Roller Conveyor	2
2	029243	10' Roller conveyor	1
3	029220	LH Tape - 12'	1
4	029230	LH Quick-Loc Assembly	1
5	029206	10' Main Rail	1
6	029174	Q/L Conveyor Mount Repack	3
6A	029175	Roller Conveyor Bracket	1 (Per) 3 Total
6B	130107	5/16-18 x 1 FSHCS	2 (Per) 6 Total
6C	130212	3/8-16 x 1-1/4" C-Bolt	1 (Per) 3 Total
6D	114011	5/16" Flat Washer	1 (Per) 3 Total
6E	108012	3/8-16 Hex Nut	1 (Per) 3 Total
7	029248	Complete Assembly	

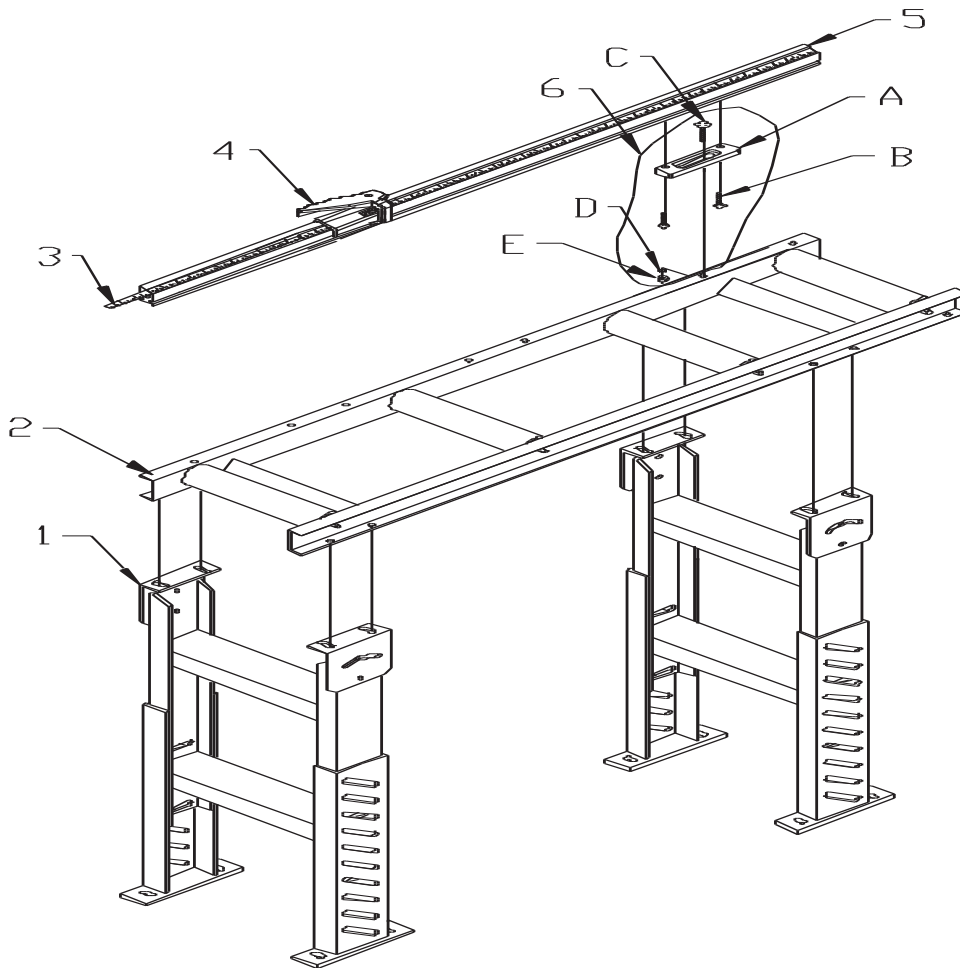


FIGURE 23

5' Conveyor W/Right Hand Quick-Loc

ITEM	PART #	DESCRIPTION	QTY
1	029244	Leg Roller Conveyor	2
2	029241	5' Roller conveyor	1
3	029226	RH Tape - 12'	1
4	029232	RH Quick-Loc Assembly	1
5	029201	5' Main Rail	1
6	029174	Q/L Conveyor Mount Repack	2
6A	029175	Roller Conveyor Bracket	1 (Per) 2 Total
6B	130107	5/16-18 x 1 FSHCS	2 (Per) 4 Total
6C	130212	3/8-16 x 1-1/4" C-Bolt	1 (Per) 2 Total
6D	114011	5/16" Flat Washer	1 (Per) 2 Total
6E	108012	3/8-16 Hex Nut	1 (Per) 2 Total
7	029249	Complete Assembly	

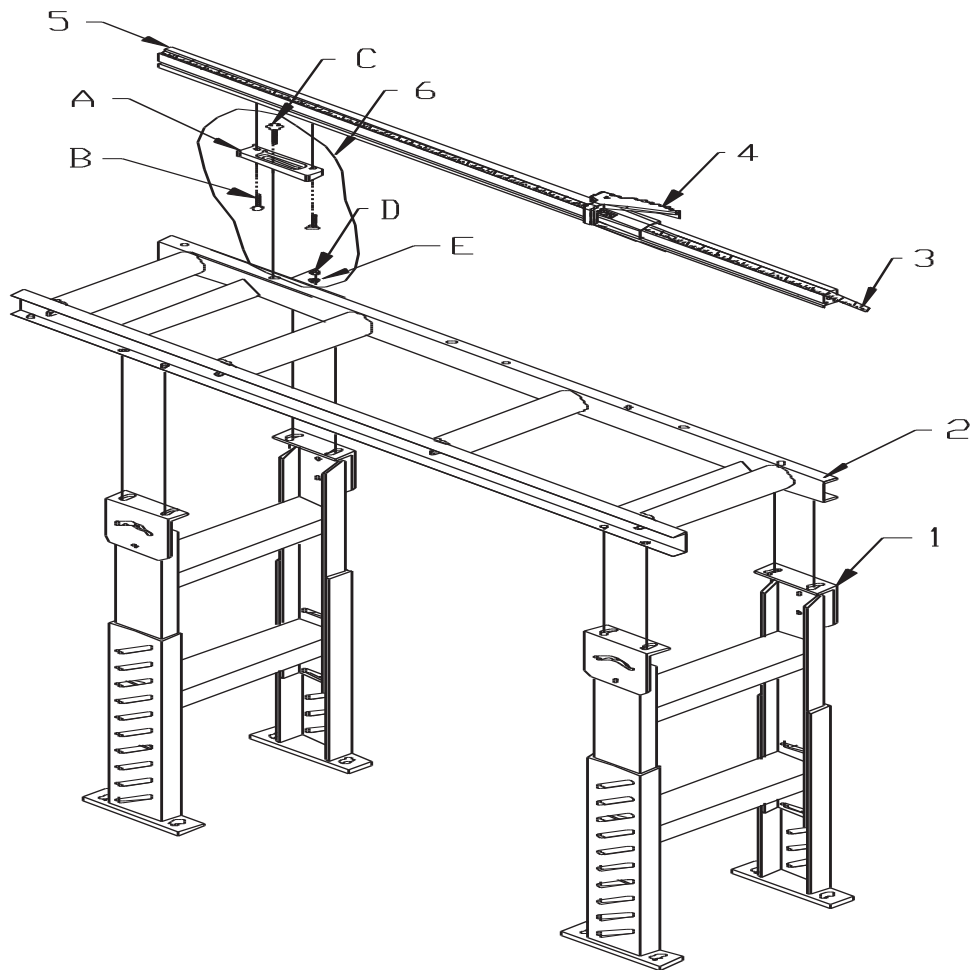


FIGURE 24

10' Conveyor W/Right Hand Quick-Loc

ITEM	PART #	DESCRIPTION	QTY
1	029244	Leg Roller Conveyor	2
2	029243	10' Roller conveyor	1
3	029226	RH Tape - 12'	1
4	029232	RH Quick-Loc Assembly	1
5	029206	10' Main Rail	1
6	029174	Q/L Conveyor Mount Repack	3
6A	029175	Roller Conveyor Bracket	1 (Per) 3 Total
6B	130107	5/16-18 x 1 FSHCS	2 (Per) 6 Total
6C	130212	3/8-16 x 1-1/4" C-Bolt	1 (Per) 3 Total
6D	114011	5/16" Flat Washer	1 (Per) 3 Total
6E	108012	3/8-16 Hex Nut	1 (Per) 3 Total
7	029250	Complete Assembly	

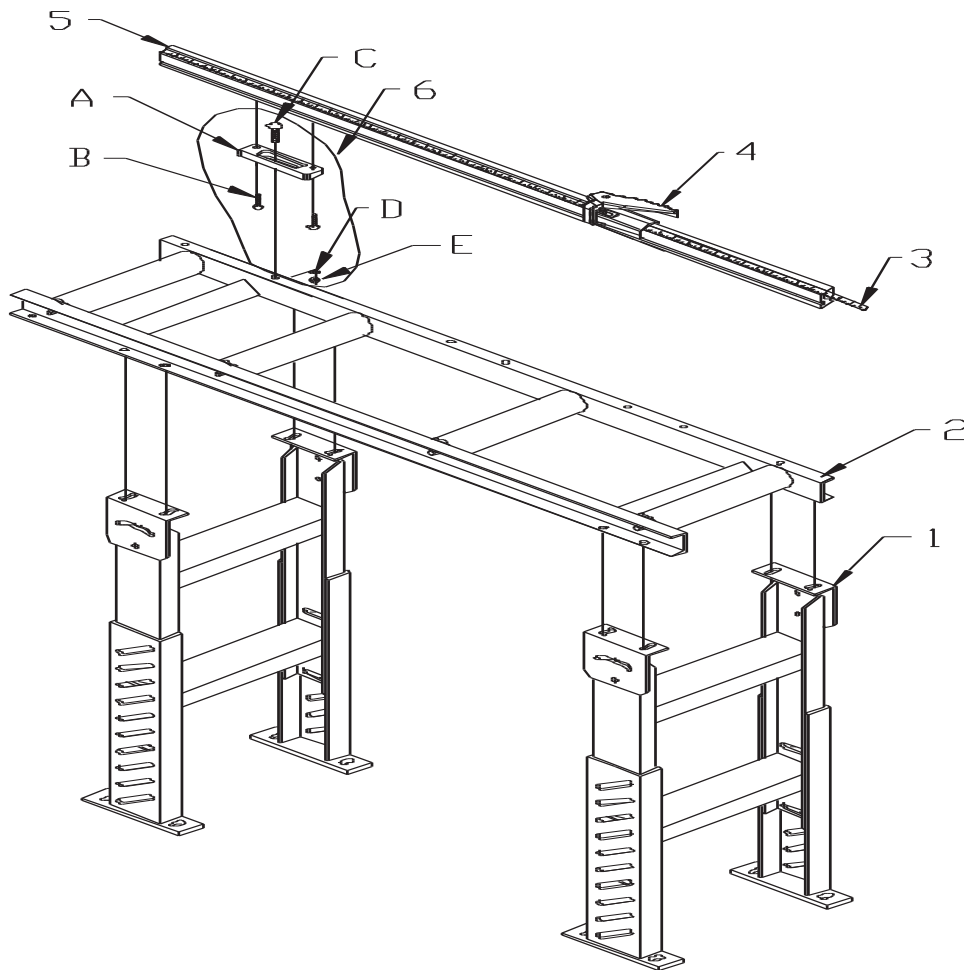


FIGURE 25