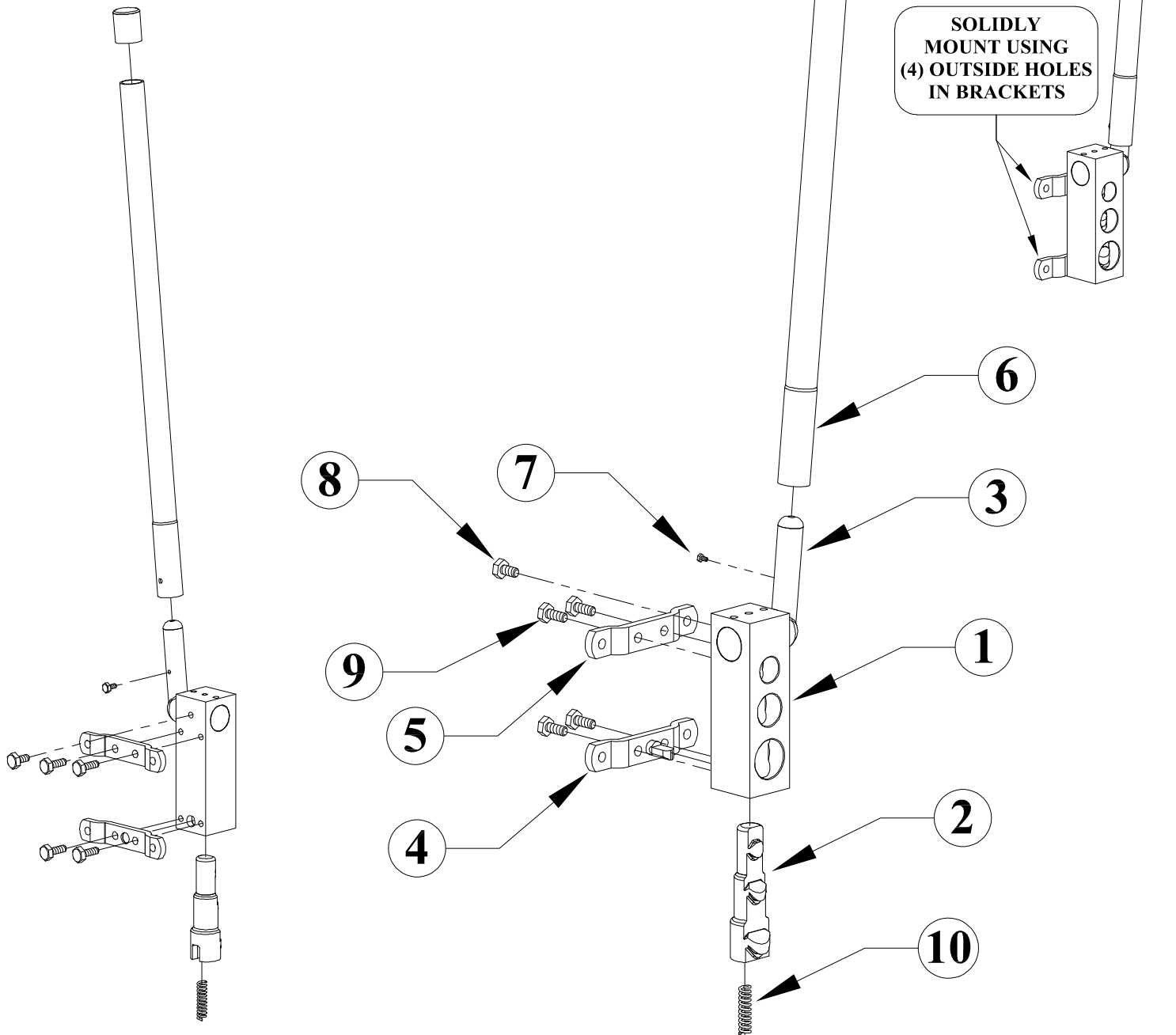


A030.00001 - AL1 MANUAL NOTCHER - 3/4in. 1in. 1-1/4in.

| | | | |
|----|---|------------|-----------------------------|
| 1 | 1 | 03.00011 | Housing AL1, manual version |
| 2 | 1 | 03.00015 | PUNCH FOR AL1 |
| 3 | 1 | 03.00078 | Excentric shaft, ALU/AL1 |
| 4 | 1 | 03.00024 | SPRING SUPPORT |
| 5 | 1 | 03.00028 | MOUNT BRACKET |
| 6 | 1 | 03.00053 | Lever AL1/ALU |
| 7 | 1 | 201110 | M6 X 12 HHCS |
| 8 | 1 | 201205 | M10 X 16MM HHCS |
| 9 | 4 | 201210 | M10 X 20MM HHCS |
| 10 | 1 | M090.00005 | PRESSURE SPRING |



| | | | | | |
|--|---|-----------------|-------------|---|------------------------|
| | TOLERANCE (UNLESS SPECIFIED) | DATE: | SCALE: | PART NAME: | |
| | .0 = +/- .02 (5mm) .00 = +/- .01 (.25mm) .000 = +/- .005 (.125mm) Fractions = +/- 1/32 (.7mm) Angles = +/- 1' | 3/5/19 | None | AL1 MAN. NOTCH. 3/4",1",1-1/4" | |
| | | DWN. BY: | CHK. BY: | MATERIAL: | PART NO. |
| | | Jason S. | | Per Part | A030.00001 |
| | | | | | Scotchman Inds. |